

Acoustic Cabinet Fans

with

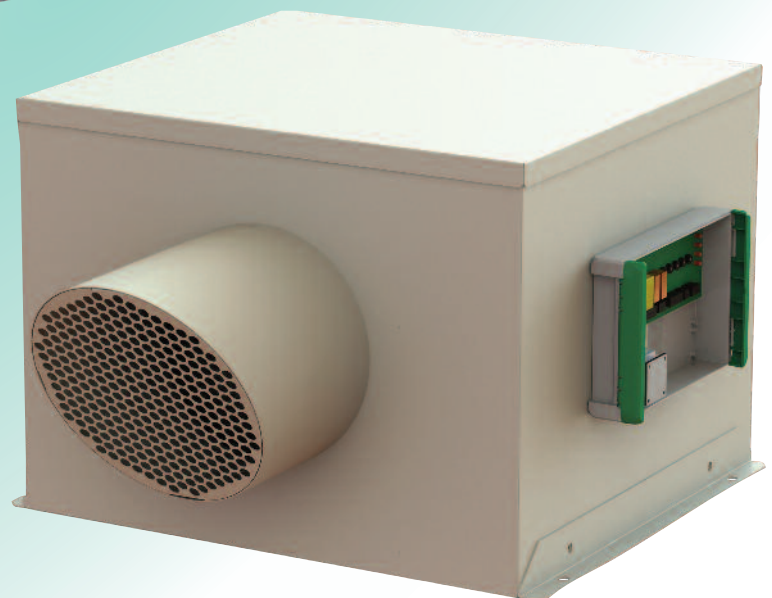
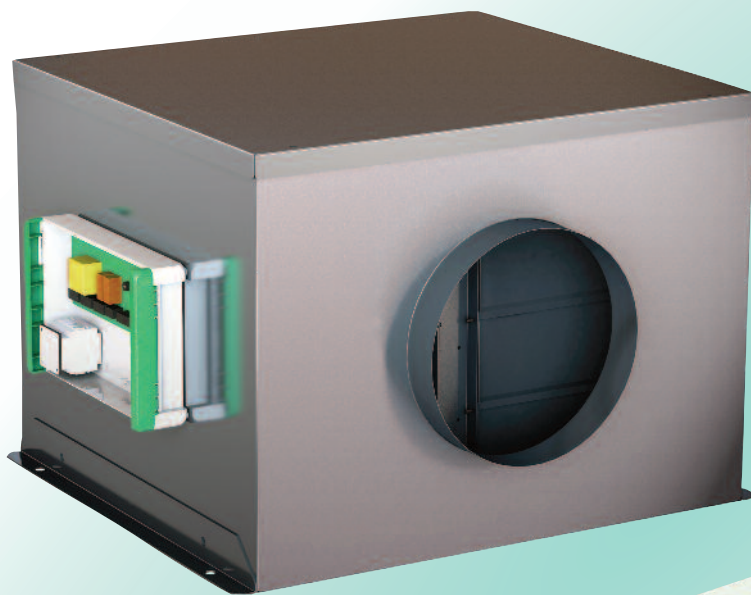
EC Motors

Twin Fan Models

Plant and Roof



*ventilation
systems*



Twin Fan Models - 0.01 m³/sec to 3.22 m³/sec - EC Motors - Low SFPs

Features and Benefits

Acoustic Cabinet Fans

- Twin fans
- ErP compliant 2009/125/EC
- EC fans to suit L2
- DMTSQ denotes internally mounted fan
- RMTS denotes externally mounted fan

Low Energy EC Fans

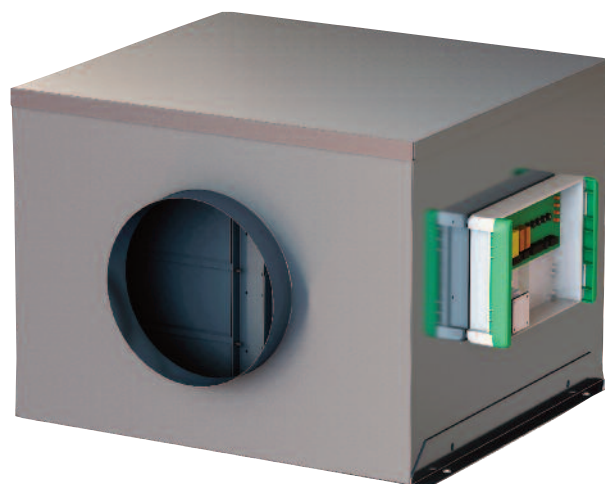
- Energy efficient direct drive fans
- Low SFP to help achieve L2 Regulations
- Constant pressure controller available

Flexible design to suit your application

- Units are constructed from galvanised steel 0.9mm to 1.2 mm depending on model
- External models are powder coated
- External models with removable discharge cowl
- Top or bottom access options available
- Bottom inlet also available on request

Acoustic lining to reduce noise breakout

- Units are lined with 20mm Barafoam "0" class liner
- A 6mm barrier mat layer is incorporated in the liner
- This significantly reduces noise breakout



Auto Changeover Panel

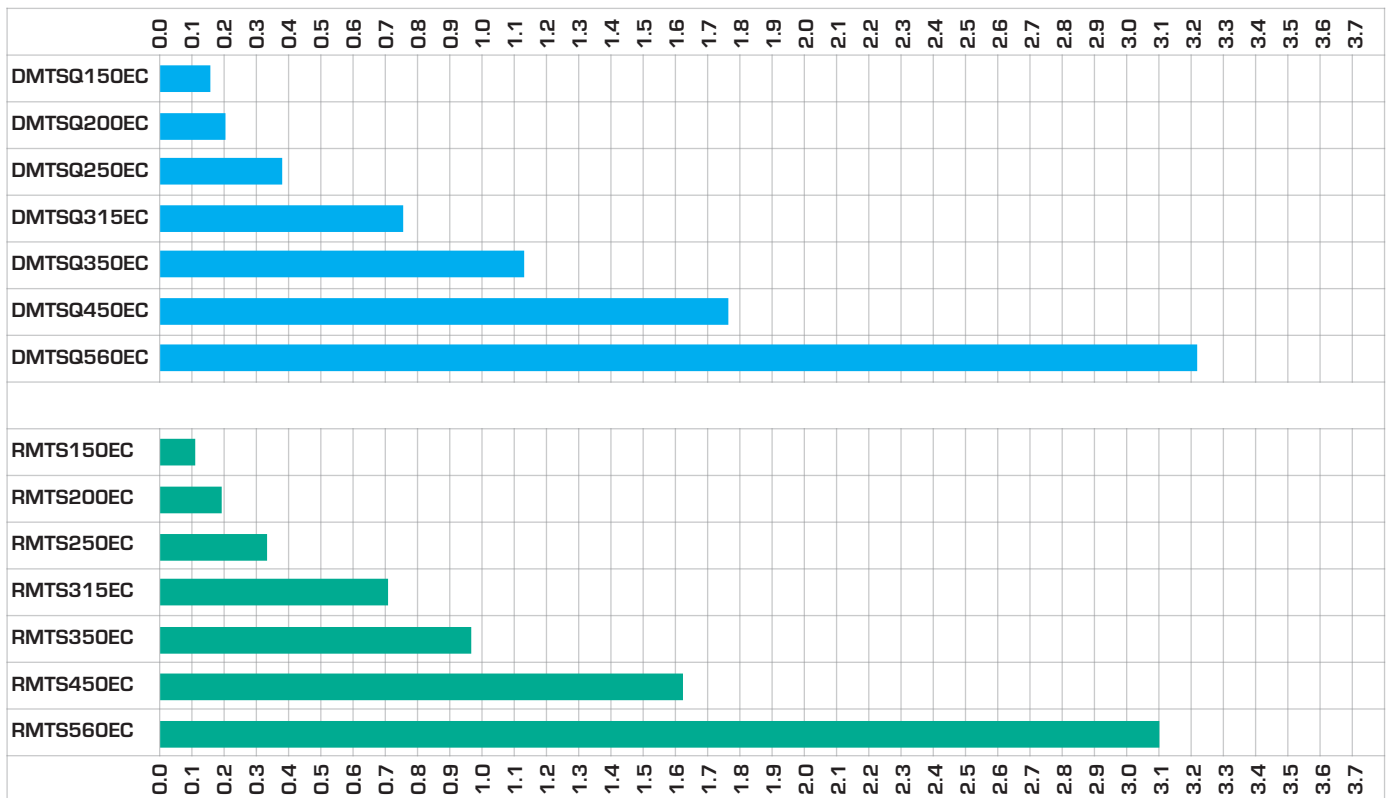
- All units are fitted with a pre-wired ACOP.
- This saves time and money on site.
- The ACOP has comprehensive features as standard.
 - VFC BMS enable
 - VFC BMS boost
 - Fan fault BMS link
 - Remote 0-10V speed control
 - Duty Share (adjustable)
 - Run on timer for boost (0-20 minutes)
 - Trickle and boost setting
 - P.I.R. enabled Boost

Accessories

- Silencers
- AV mounts
- Duct clamps



Maximum Air Volume (m³/sec)

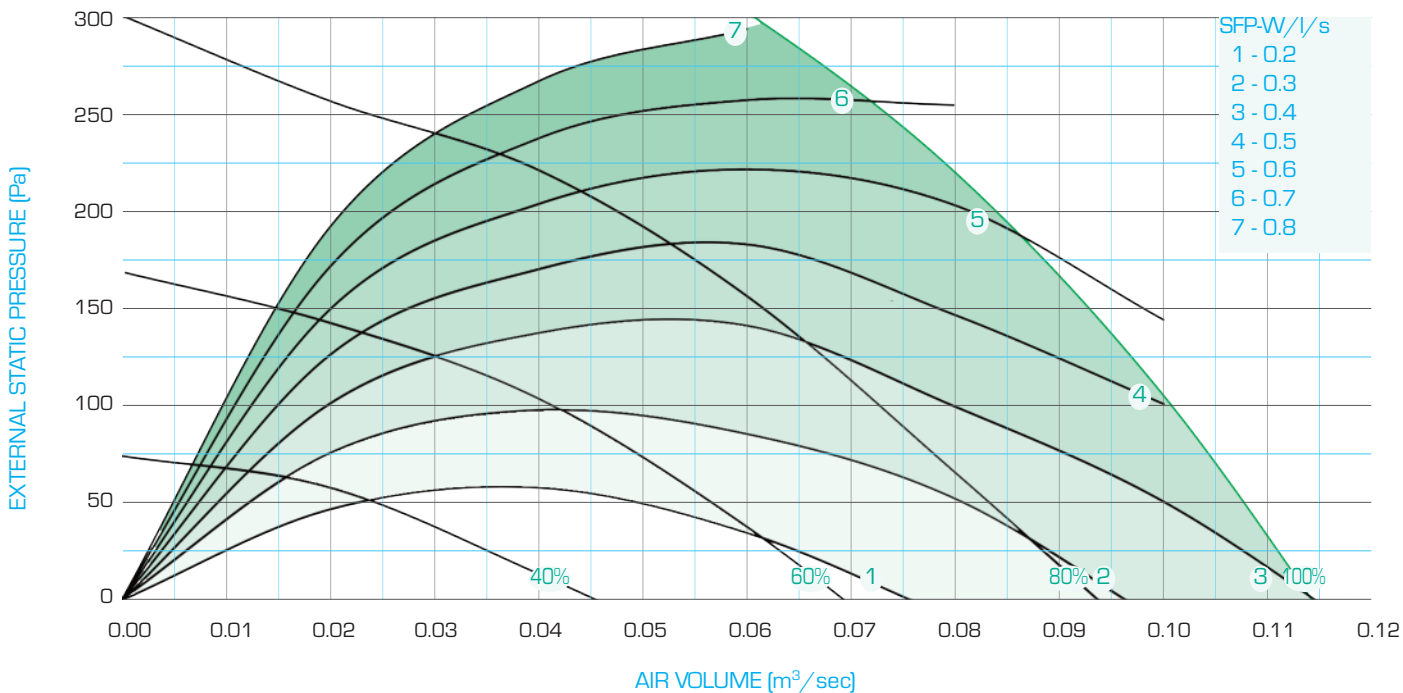


Acoustic Cabinet Fans - Twin - DMTSQ-EC



TECHNICAL DATA - DMTSQ 150-EC - plant model

FAN SPEED



| ELECTRICAL DATA | MODEL | FAN POWER W | SUPPLY | FLC amps |
|-----------------|--------------|-------------|----------|----------|
| | DMTSQ 150 EC | 52 | 230V 1Ph | 0.40 |

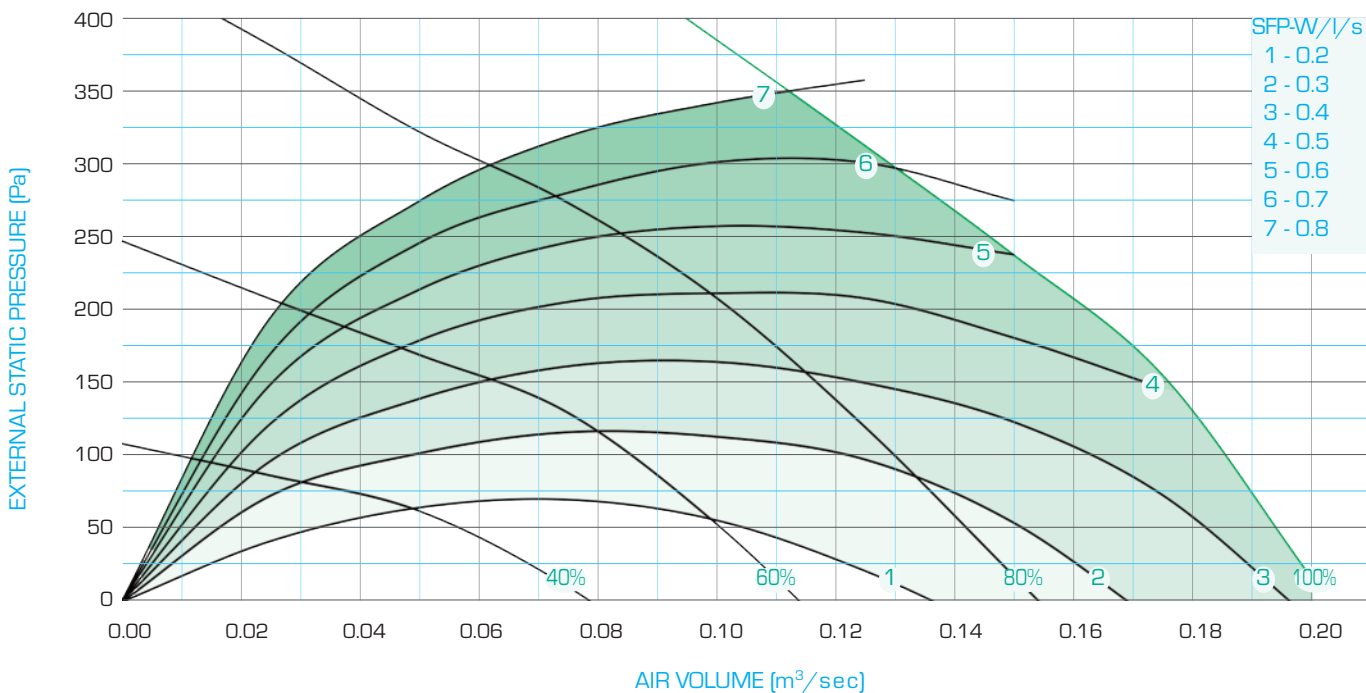
| DMTSQ 150 EC @ mid-duty | | Mid Octave Frequency band / Hz | | | | | | | | Total in Duct | | Breakout @ 1m | | Breakout @ 3m | |
|--------------------------------|-------------------|--------------------------------|-----|-----|-----|----|----|----|----|---------------|-------|---------------|----|---------------|----|
| | | 63 | 125 | 250 | 500 | 1k | 2k | 4k | 8k | dB | dB(A) | dB(A) | NR | dB(A) | NR |
| 0.081 m³/s @ 200 Pa 100% | Inlet in duct dB | 57 | 61 | 63 | 64 | 61 | 59 | 60 | 51 | 70 | 67 | 39 | 34 | 29 | 24 |
| | Outlet in duct dB | 63 | 66 | 68 | 69 | 66 | 64 | 65 | 56 | 74 | 71 | | | | |
| 0.059 m³/s @ 150 Pa 80% | Inlet in duct dB | 60 | 58 | 59 | 59 | 56 | 54 | 51 | 42 | 66 | 61 | 34 | 29 | 25 | 19 |
| | Outlet in duct dB | 65 | 63 | 64 | 64 | 61 | 59 | 57 | 47 | 71 | 67 | | | | |
| 0.040 m³/s @ 100 Pa 60% | Inlet in duct dB | 55 | 55 | 54 | 54 | 51 | 48 | 44 | 33 | 61 | 56 | 30 | 24 | 20 | 14 |
| | Outlet in duct dB | 60 | 60 | 59 | 59 | 56 | 53 | 49 | 38 | 66 | 61 | | | | |
| 0.024 m³/s @ 50 Pa 40% | Inlet in duct dB | 48 | 49 | 47 | 47 | 42 | 39 | 33 | 20 | 54 | 48 | 23 | 17 | 13 | 7 |
| | Outlet in duct dB | 53 | 54 | 52 | 52 | 47 | 44 | 38 | 25 | 59 | 53 | | | | |

Acoustic Cabinet Fans - Twin - DMTSQ-EC



TECHNICAL DATA - DMTSQ 200-EC - plant model

FAN SPEED



| ELECTRICAL DATA | MODEL | FAN POWER W | SUPPLY | FLC amps |
|-----------------|--------------|-------------|----------|----------|
| | DMTSQ 200 EC | 70 | 230V 1Ph | 0.55 |

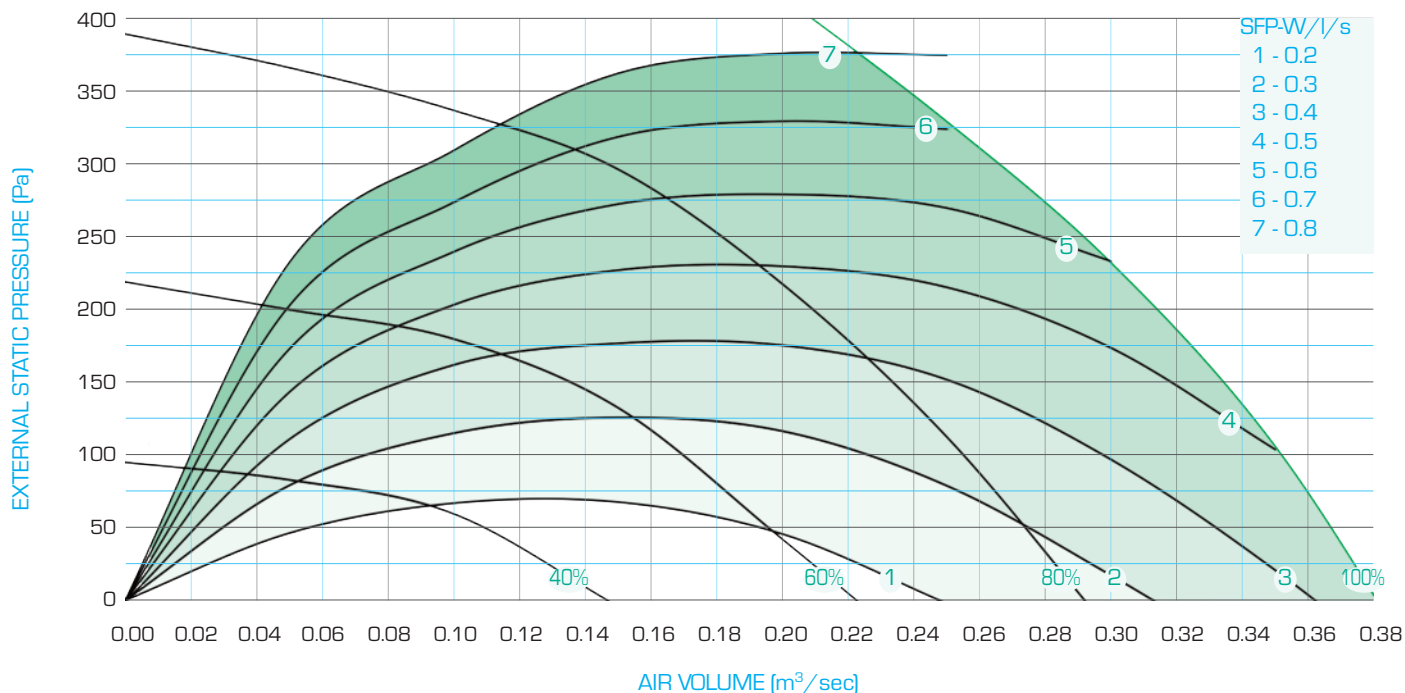
| DMTSQ 200 EC @ mid-duty | | Mid Octave Frequency band / Hz | | | | | | | | Total in Duct | | Breakout @ 1m | | Breakout @ 3m | |
|--------------------------------|-------------------|--------------------------------|-----|-----|-----|----|----|----|----|---------------|-------|---------------|----|---------------|----|
| | | 63 | 125 | 250 | 500 | 1k | 2k | 4k | 8k | dB | dB(A) | dB(A) | NR | dB(A) | NR |
| 0.155 m³/s @ 200 Pa 100% | Inlet in duct dB | 54 | 57 | 59 | 61 | 61 | 61 | 57 | 55 | 68 | 66 | 36 | 31 | 27 | 21 |
| | Outlet in duct dB | 59 | 62 | 64 | 66 | 66 | 66 | 62 | 60 | 73 | 71 | | | | |
| 0.114 m³/s @ 150 Pa 80% | Inlet in duct dB | 50 | 53 | 54 | 56 | 55 | 55 | 50 | 47 | 62 | 61 | 31 | 26 | 22 | 16 |
| | Outlet in duct dB | 55 | 58 | 59 | 61 | 60 | 60 | 55 | 52 | 67 | 66 | | | | |
| 0.084 m³/s @ 100 Pa 60% | Inlet in duct dB | 45 | 48 | 49 | 50 | 50 | 49 | 43 | 38 | 57 | 54 | 26 | 20 | 16 | 10 |
| | Outlet in duct dB | 50 | 53 | 54 | 55 | 55 | 54 | 48 | 43 | 62 | 59 | | | | |
| 0.055 m³/s @ 50 Pa 40% | Inlet in duct dB | 39 | 41 | 40 | 42 | 41 | 40 | 33 | 25 | 49 | 46 | 17 | 12 | 8 | 2 |
| | Outlet in duct dB | 44 | 46 | 45 | 47 | 46 | 45 | 38 | 30 | 54 | 51 | | | | |

Acoustic Cabinet Fans - Twin - DMTSQ-EC



TECHNICAL DATA - DMTSQ 250-EC -plant model

FAN SPEED



| ELECTRICAL DATA | MODEL | FAN POWER W | SUPPLY | FLC amps |
|-----------------|--------------|-------------|----------|----------|
| | DMTSQ 250 EC | 170 | 230V 1Ph | 1.40 |

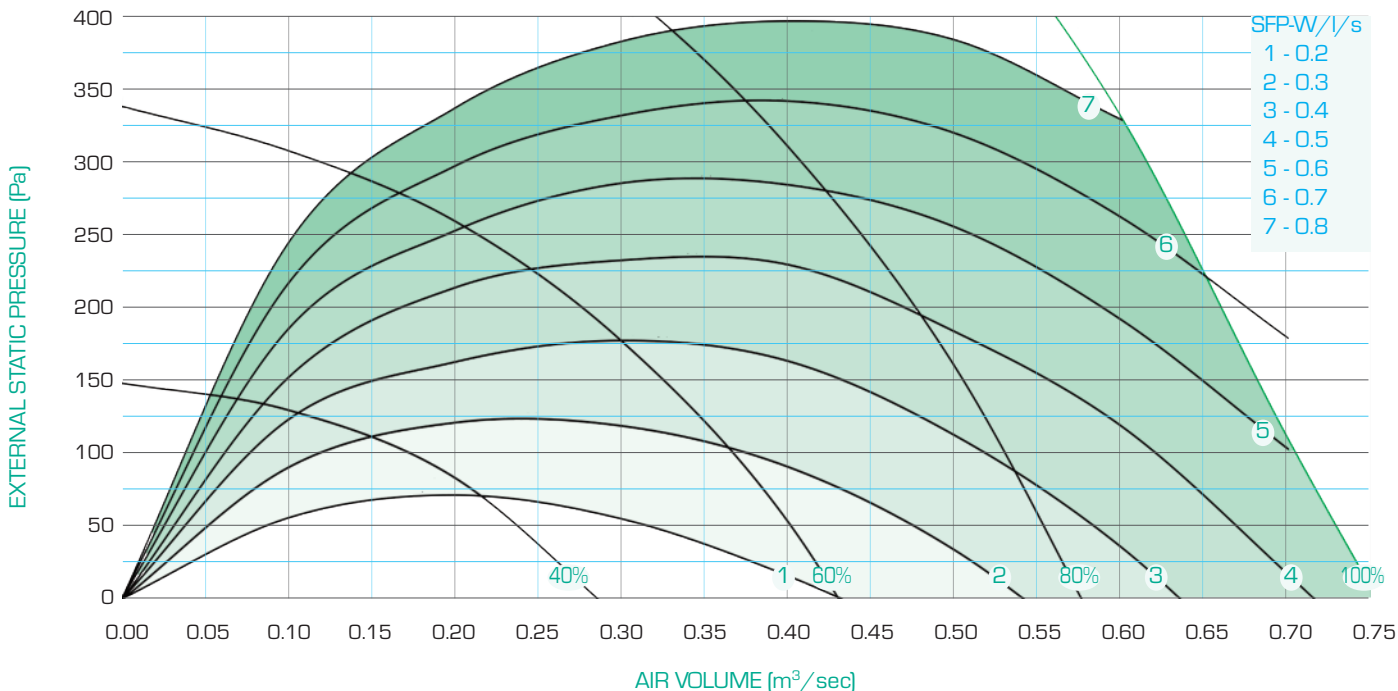
| DMTSQ 250 EC @ mid-duty | | Mid Octave Frequency band / Hz | | | | | | | | Total in Duct | | Breakout @ 1m | | Breakout @ 3m | |
|--------------------------------|-------------------|--------------------------------|-----|-----|-----|----|----|----|----|---------------|-------|---------------|----|---------------|----|
| | | 63 | 125 | 250 | 500 | 1k | 2k | 4k | 8k | dB | dB(A) | dB(A) | NR | dB(A) | NR |
| 0.305 m³/s @ 200 Pa 100% | Inlet in duct dB | 61 | 65 | 64 | 64 | 64 | 62 | 61 | 54 | 72 | 69 | 40 | 34 | 31 | 24 |
| | Outlet in duct dB | 66 | 70 | 69 | 69 | 69 | 67 | 66 | 59 | 77 | 74 | | | | |
| 0.228 m³/s @ 150 Pa 80% | Inlet in duct dB | 56 | 60 | 58 | 58 | 58 | 56 | 54 | 45 | 66 | 63 | 35 | 28 | 25 | 18 |
| | Outlet in duct dB | 61 | 65 | 63 | 63 | 63 | 61 | 59 | 50 | 71 | 68 | | | | |
| 0.168 m³/s @ 100 Pa 60% | Inlet in duct dB | 51 | 55 | 52 | 52 | 51 | 49 | 46 | 35 | 60 | 56 | 28 | 22 | 19 | 12 |
| | Outlet in duct dB | 56 | 60 | 57 | 57 | 56 | 54 | 51 | 40 | 65 | 61 | | | | |
| 0.108 m³/s @ 50 Pa 40% | Inlet in duct dB | 44 | 46 | 43 | 42 | 42 | 40 | 34 | 31 | 51 | 46 | 19 | 12 | 10 | 2 |
| | Outlet in duct dB | 49 | 51 | 48 | 47 | 47 | 45 | 39 | 26 | 56 | 51 | | | | |

Acoustic Cabinet Fans - Twin - DMTSQ-EC



TECHNICAL DATA - DMTSQ 315-EC -plant model

FAN SPEED



| ELECTRICAL DATA | MODEL | FAN POWER W | SUPPLY | FLC amps |
|-----------------|--------------|-------------|----------|----------|
| | DMTSQ 315 EC | 510 | 230V 1Ph | 3.10 |

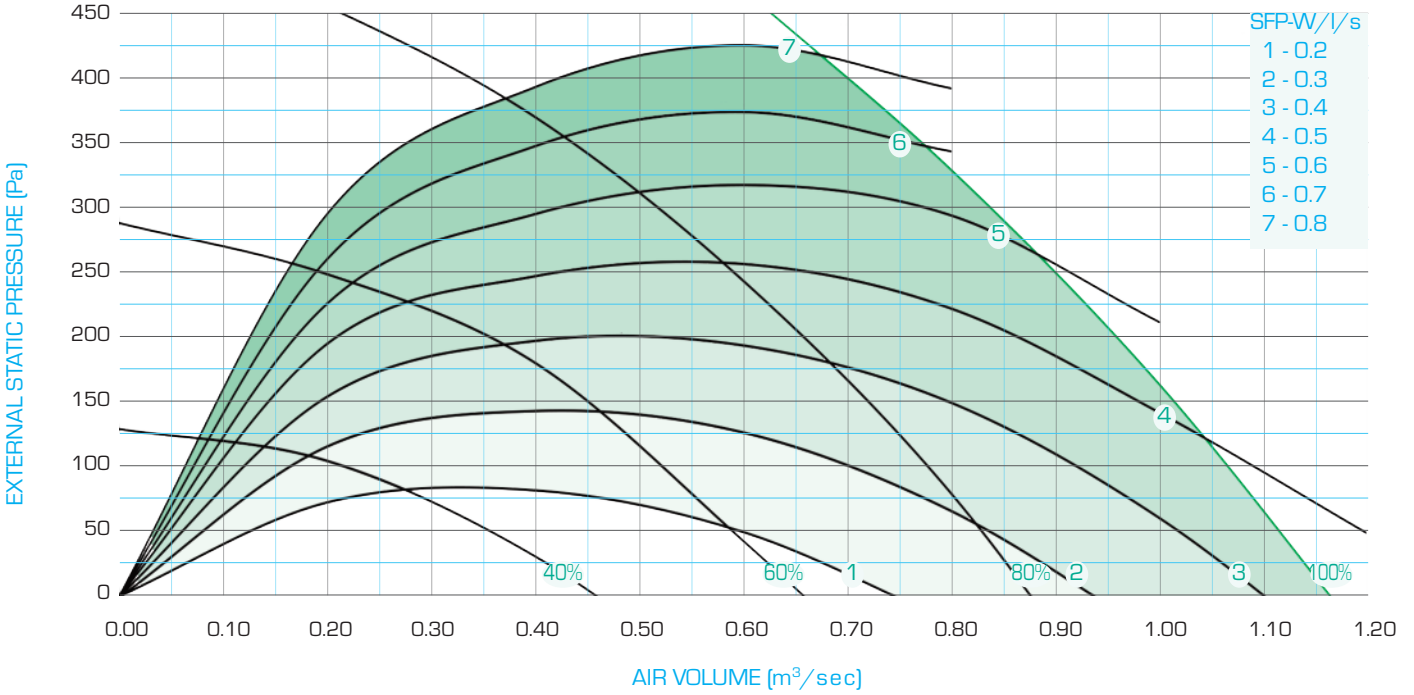
| DMTSQ 315EC @ mid-duty | | Mid Octave Frequency band / Hz | | | | | | | | Total in Duct | | Breakout @ 1m | | Breakout @ 3m | |
|------------------------------|-------------------|--------------------------------|-----|-----|-----|----|----|----|----|---------------|-------|---------------|----|---------------|----|
| | | 63 | 125 | 250 | 500 | 1k | 2k | 4k | 8k | dB | dB(A) | dB(A) | NR | dB(A) | NR |
| 0.62m³/s @ 200 Pa 100% | Inlet in duct dB | 65 | 71 | 77 | 75 | 73 | 71 | 69 | 62 | 81 | 78 | 51 | 48 | 42 | 38 |
| | Outlet in duct dB | 70 | 76 | 82 | 80 | 78 | 76 | 74 | 67 | 86 | 83 | | | | |
| 0.48 m³/s @ 150 Pa 80% | Inlet in duct dB | 61 | 67 | 71 | 69 | 67 | 65 | 63 | 54 | 76 | 72 | 45 | 42 | 36 | 32 |
| | Outlet in duct dB | 66 | 72 | 76 | 74 | 72 | 70 | 68 | 59 | 81 | 77 | | | | |
| 0.34 m³/s @ 100 Pa 60% | Inlet in duct dB | 56 | 61 | 63 | 61 | 60 | 58 | 54 | 44 | 68 | 65 | 33 | 33 | 28 | 23 |
| | Outlet in duct dB | 61 | 66 | 68 | 66 | 65 | 63 | 59 | 49 | 73 | 70 | | | | |
| 0.23 m³/s @ 50 Pa 40% | Inlet in duct dB | 50 | 54 | 54 | 52 | 51 | 49 | 44 | 31 | 60 | 56 | 29 | 24 | 19 | 13 |
| | Outlet in duct dB | 55 | 59 | 59 | 57 | 56 | 54 | 49 | 36 | 65 | 61 | | | | |

Acoustic Cabinet Fans - Twin - DMTSQ-EC



TECHNICAL DATA - DMTSQ 350-EC -plant model

FAN SPEED



| ELECTRICAL DATA | MODEL | FAN POWER W | SUPPLY | FLC amps |
|-----------------|--------------|-------------|----------|----------|
| | DMTSQ 350 EC | 450 | 230V 1Ph | 2.90 |

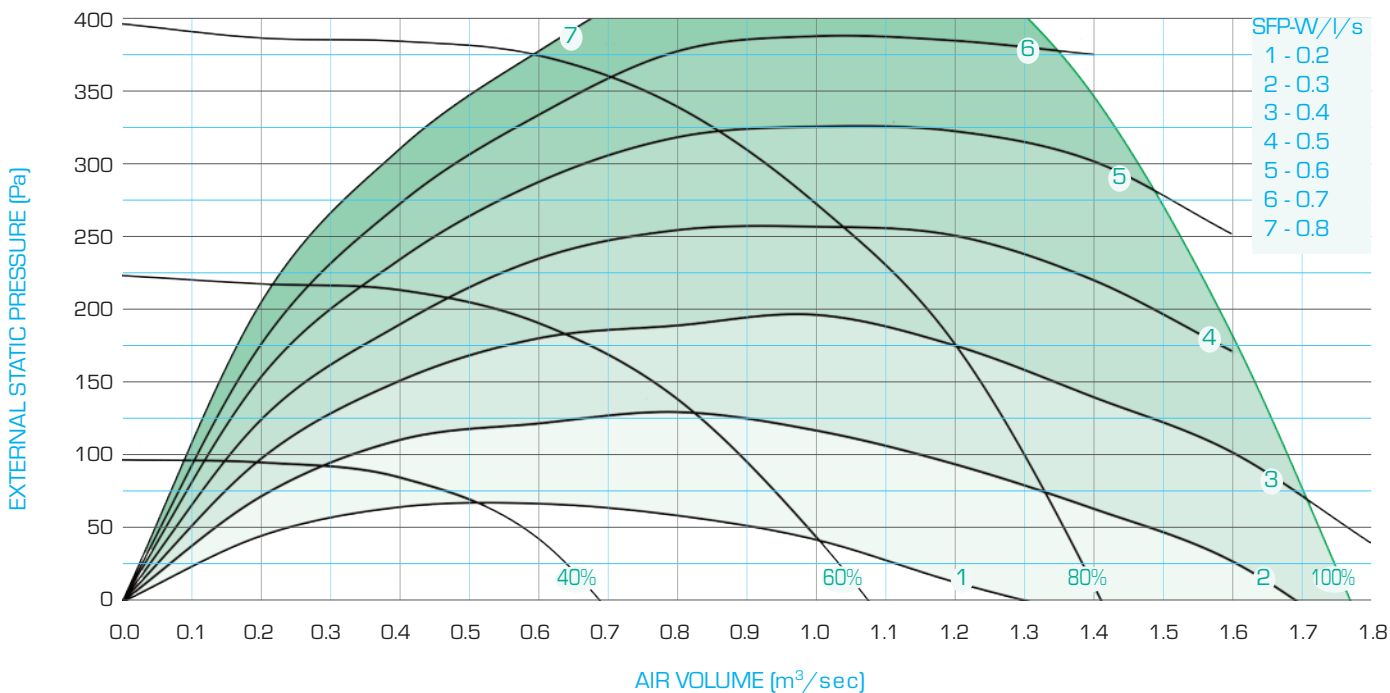
| DMTSQ 350 EC @ mid-duty | | Mid Octave Frequency band / Hz | | | | | | | | Total in Duct | | Breakout @ 1m | | Breakout @ 3m | |
|------------------------------|-------------------|--------------------------------|-----|-----|-----|----|----|----|----|---------------|-------|---------------|----|---------------|----|
| | | 63 | 125 | 250 | 500 | 1k | 2k | 4k | 8k | dB | dB(A) | dB(A) | NR | dB(A) | NR |
| 0.94m³/s @ 200 Pa 100% | Inlet in duct dB | 66 | 70 | 74 | 70 | 65 | 64 | 65 | 53 | 78 | 73 | 47 | 45 | 38 | 35 |
| | Outlet in duct dB | 71 | 75 | 79 | 75 | 70 | 70 | 70 | 58 | 83 | 78 | | | | |
| 0.71 m³/s @ 150 Pa 80% | Inlet in duct dB | 62 | 66 | 68 | 64 | 58 | 57 | 57 | 43 | 72 | 66 | 41 | 39 | 32 | 28 |
| | Outlet in duct dB | 67 | 71 | 73 | 69 | 63 | 62 | 62 | 48 | 77 | 71 | | | | |
| 0.52 m³/s @ 100 Pa 60% | Inlet in duct dB | 57 | 62 | 62 | 57 | 51 | 50 | 48 | 34 | 66 | 59 | 36 | 32 | 26 | 22 |
| | Outlet in duct dB | 62 | 67 | 67 | 62 | 56 | 55 | 53 | 39 | 71 | 64 | | | | |
| 0.36 m³/s @ 50 Pa 40% | Inlet in duct dB | 50 | 55 | 53 | 48 | 43 | 41 | 37 | 21 | 59 | 51 | 27 | 23 | 18 | 12 |
| | Outlet in duct dB | 55 | 60 | 58 | 53 | 48 | 46 | 42 | 26 | 64 | 56 | | | | |

Acoustic Cabinet Fans - Twin - DMTSQ-EC



TECHNICAL DATA - DMTSQ 450-EC -plant model

FAN SPEED



| ELECTRICAL DATA | MODEL | FAN POWER W | SUPPLY | FLC amps |
|-----------------|--------------|-------------|----------|----------|
| | DMTSQ 450 EC | 1010 | 400V 3Ph | 1.60 |

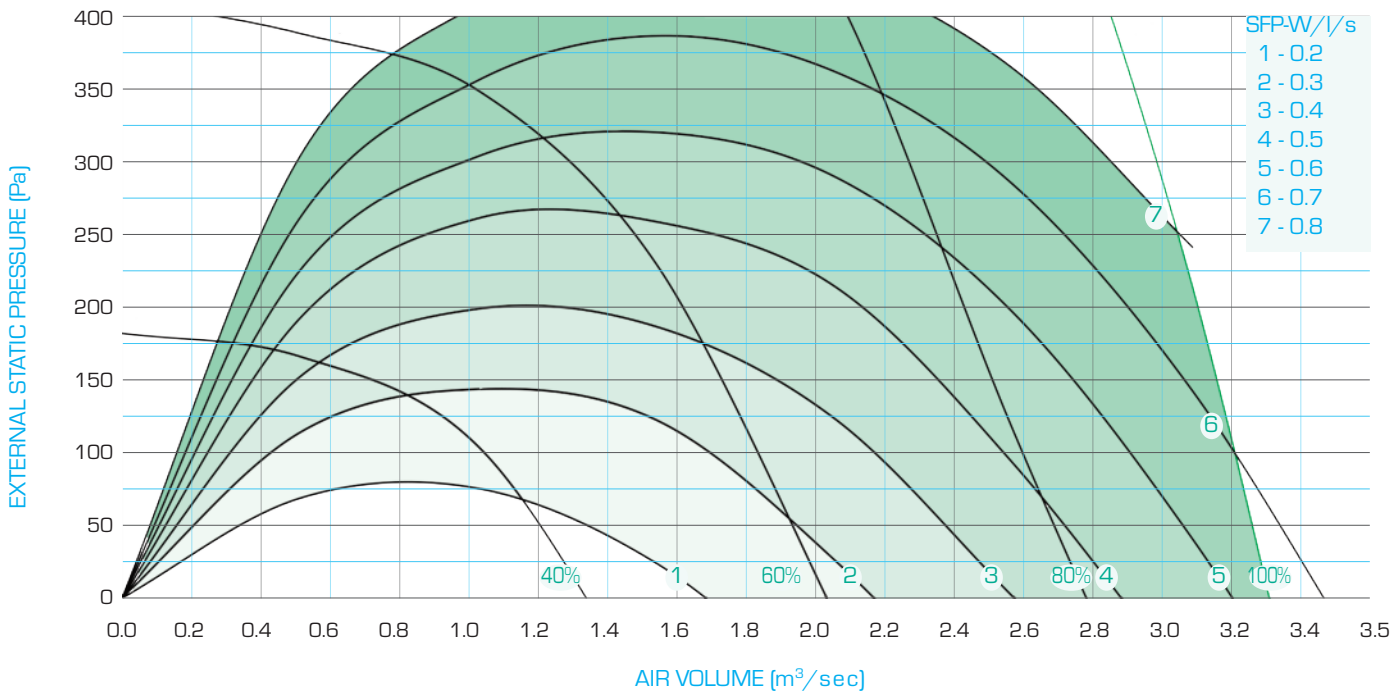
| DMTSQ 450 EC @ mid-duty | | Mid Octave Frequency band / Hz | | | | | | | | Total in Duct | | Breakout @ 1m | | Breakout @ 3m | |
|-------------------------------|-------------------|--------------------------------|-----|-----|-----|----|----|----|----|---------------|-------|---------------|----|---------------|----|
| | | 63 | 125 | 250 | 500 | 1k | 2k | 4k | 8k | dB | dB(A) | dB(A) | NR | dB(A) | NR |
| 1.48 m³/s @ 200 Pa 100% | Inlet in duct dB | 67 | 72 | 72 | 72 | 67 | 69 | 61 | 54 | 78 | 75 | 46 | 42 | 37 | 32 |
| | Outlet in duct dB | 69 | 73 | 72 | 76 | 77 | 76 | 67 | 59 | 83 | 81 | | | | |
| 1.15 m³/s @ 150 Pa 80% | Inlet in duct dB | 63 | 66 | 66 | 66 | 61 | 62 | 55 | 46 | 72 | 68 | 41 | 36 | 31 | 26 |
| | Outlet in duct dB | 64 | 68 | 67 | 70 | 71 | 69 | 60 | 51 | 77 | 75 | | | | |
| 0.82 m³/s @ 100 Pa 60% | Inlet in duct dB | 57 | 60 | 59 | 59 | 54 | 55 | 47 | 36 | 66 | 61 | 34 | 29 | 24 | 19 |
| | Outlet in duct dB | 58 | 62 | 60 | 63 | 64 | 62 | 53 | 42 | 70 | 68 | | | | |
| 0.53 m³/s @ 50 Pa 40% | Inlet in duct dB | 49 | 53 | 49 | 49 | 45 | 46 | 37 | 23 | 57 | 52 | 25 | 20 | 15 | 10 |
| | Outlet in duct dB | 51 | 55 | 50 | 53 | 55 | 53 | 43 | 27 | 61 | 58 | | | | |

Acoustic Cabinet Fans - Twin - DMTSQ-EC



TECHNICAL DATA - DMTSQ 5600-EC -plant model

FAN SPEED



| ELECTRICAL DATA | MODEL | FAN POWER W | SUPPLY | FLC amps |
|-----------------|--------------|-------------|----------|----------|
| | DMTSQ 560 EC | 3100 | 400V 3Ph | 4.9 |

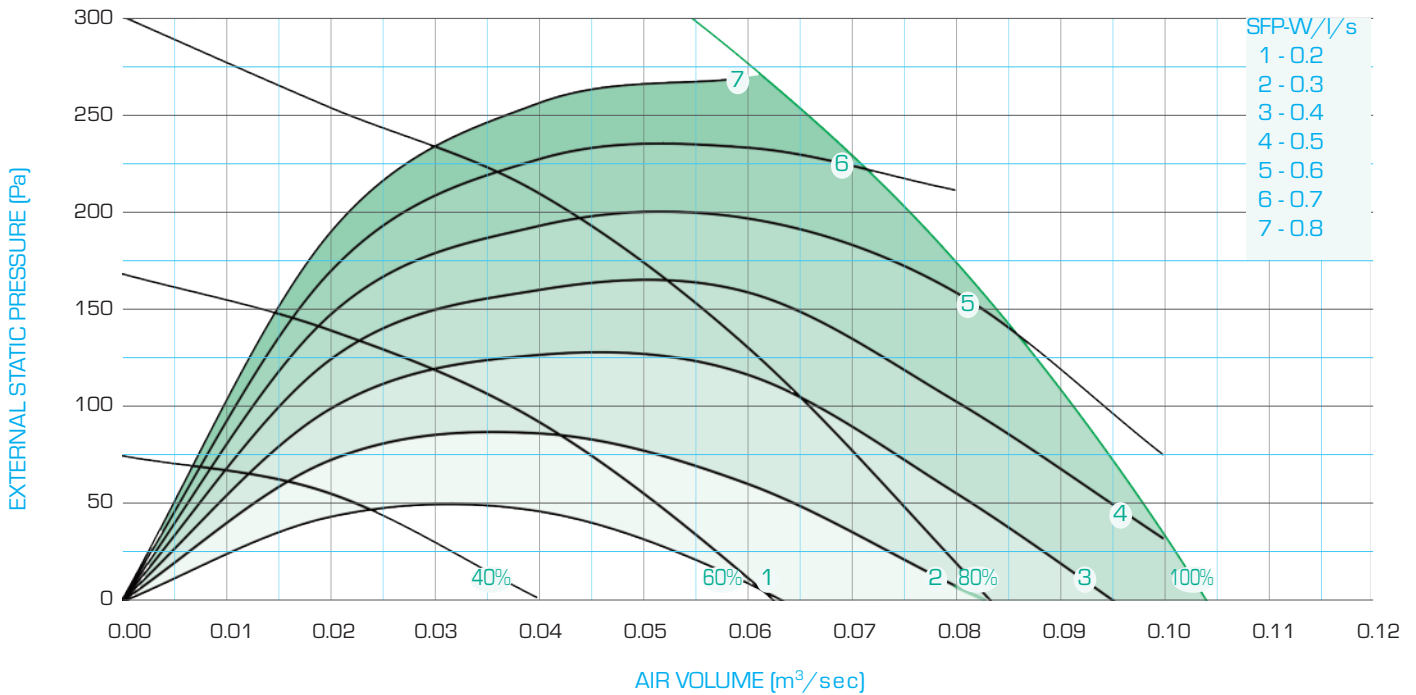
| DMTSQ 560 EC @ mid-duty | | Mid Octave Frequency band / Hz | | | | | | | | Total in Duct | | Breakout @ 1m | | Breakout @ 3m | |
|-------------------------------|-------------------|--------------------------------|-----|-----|-----|----|----|----|----|---------------|-------|---------------|----|---------------|----|
| | | 63 | 125 | 250 | 500 | 1k | 2k | 4k | 8k | dB | dB(A) | dB(A) | NR | dB(A) | NR |
| 3.02 m³/s @ 200 Pa 100% | Inlet in duct dB | 72 | 75 | 82 | 79 | 77 | 80 | 75 | 79 | 87 | 85 | 56 | 51 | 46 | 41 |
| | Outlet in duct dB | 74 | 77 | 83 | 85 | 86 | 85 | 79 | 81 | 92 | 91 | | | | |
| 2.40 m³/s @ 150 Pa 80% | Inlet in duct dB | 69 | 74 | 76 | 74 | 71 | 73 | 71 | 67 | 82 | 79 | 50 | 45 | 40 | 35 |
| | Outlet in duct dB | 70 | 75 | 77 | 79 | 80 | 79 | 74 | 70 | 86 | 85 | | | | |
| 1.76 m³/s @ 100 Pa 60% | Inlet in duct dB | 64 | 67 | 69 | 66 | 64 | 65 | 63 | 56 | 74 | 71 | 42 | 38 | 33 | 28 |
| | Outlet in duct dB | 66 | 69 | 69 | 71 | 73 | 70 | 66 | 59 | 78 | 77 | | | | |
| 1.16 m³/s @ 50 Pa 40% | Inlet in duct dB | 63 | 59 | 59 | 57 | 56 | 56 | 46 | 41 | 67 | 61 | 33 | 29 | 23 | 19 |
| | Outlet in duct dB | 64 | 60 | 59 | 62 | 64 | 59 | 50 | 44 | 70 | 67 | | | | |

Acoustic Cabinet Fans - Twin - RMTS-EC



TECHNICAL DATA - RMTS 150-EC - roof model

FAN SPEED



| ELECTRICAL DATA | MODEL | FAN POWER W | SUPPLY | FLC amps |
|-----------------|-------------|-------------|----------|----------|
| | RMTS 150 EC | 52 | 230V 1Ph | 0.40 |

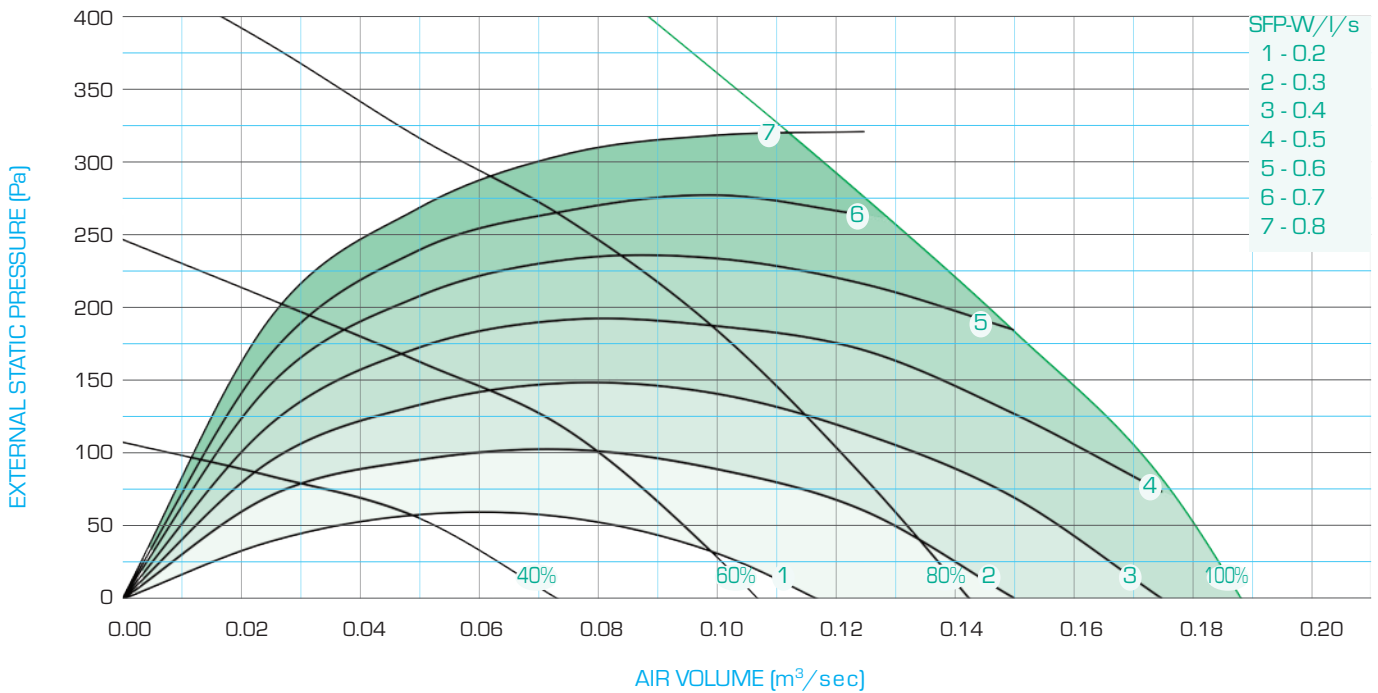
| RMTS 150 EC @ mid-duty | | Mid Octave Frequency band / Hz | | | | | | | | Total in Duct | | Breakout @ 1m | | Breakout @ 3m | |
|--------------------------------|-------------------|--------------------------------|-----|-----|-----|----|----|----|----|---------------|-------|---------------|----|---------------|----|
| | | 63 | 125 | 250 | 500 | 1k | 2k | 4k | 8k | dB | dB(A) | dB(A) | NR | dB(A) | NR |
| 0.074 m³/s @ 200 Pa 100% | Inlet in duct dB | 64 | 63 | 64 | 65 | 62 | 59 | 58 | 50 | 71 | 67 | 40 | 35 | 30 | 25 |
| | Outlet in duct dB | 69 | 68 | 69 | 70 | 67 | 64 | 63 | 55 | 76 | 72 | | | | |
| 0.055 m³/s @ 150 Pa 80% | Inlet in duct dB | 60 | 60 | 60 | 60 | 57 | 54 | 51 | 43 | 67 | 62 | 36 | 30 | 26 | 20 |
| | Outlet in duct dB | 65 | 65 | 65 | 65 | 62 | 59 | 57 | 48 | 72 | 67 | | | | |
| 0.036 m³/s @ 100 Pa 60% | Inlet in duct dB | 55 | 56 | 55 | 55 | 51 | 48 | 43 | 33 | 62 | 56 | 31 | 25 | 21 | 15 |
| | Outlet in duct dB | 60 | 61 | 60 | 60 | 56 | 53 | 48 | 38 | 67 | 61 | | | | |
| 0.022 m³/s @ 50 Pa 40% | Inlet in duct dB | 47 | 49 | 46 | 46 | 41 | 38 | 31 | 19 | 54 | 47 | 22 | 16 | 12 | 6 |
| | Outlet in duct dB | 52 | 54 | 51 | 51 | 46 | 43 | 36 | 24 | 59 | 52 | | | | |

Acoustic Cabinet Fans - Twin - RMTS-EC



TECHNICAL DATA - RMTS 200-EC - roof model

FAN SPEED



| ELECTRICAL DATA | MODEL | FAN POWER W | SUPPLY | FLC amps |
|-----------------|-------------|-------------|----------|----------|
| | RMTS 200 EC | 70 | 230V 1Ph | 0.55 |

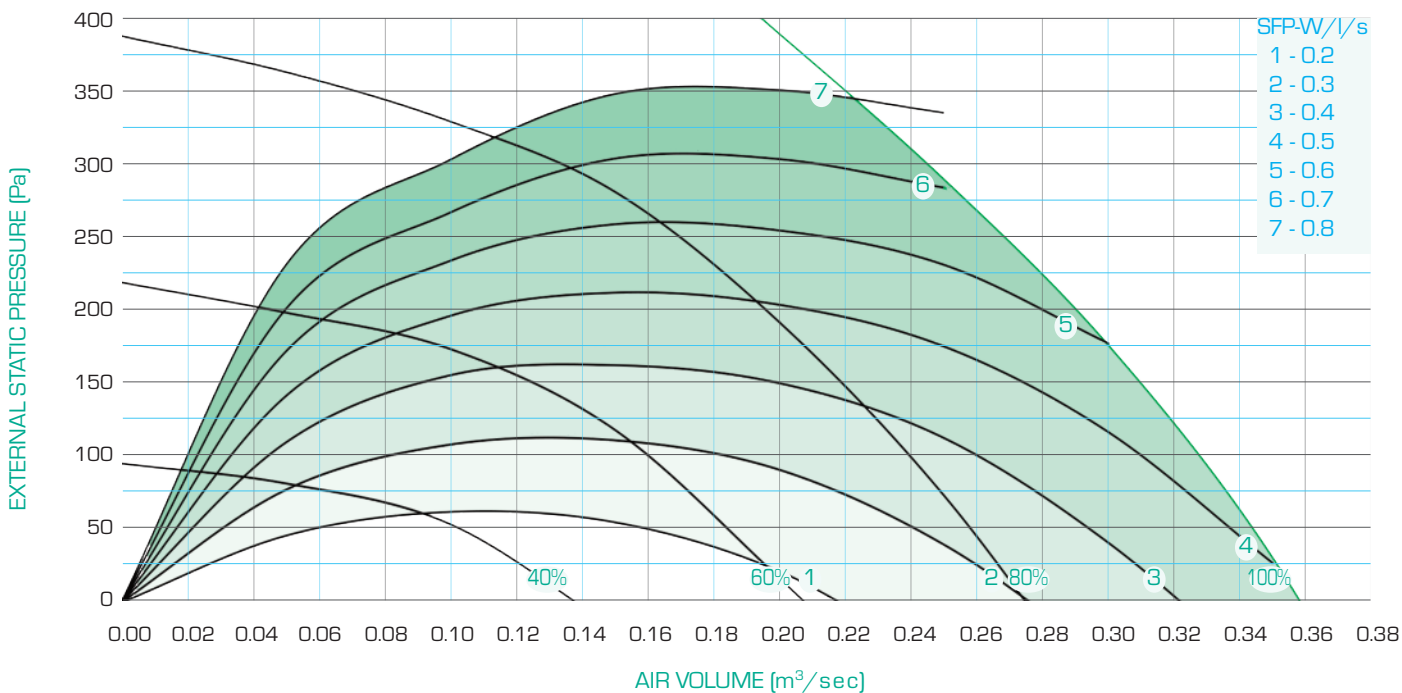
| RMTS 200 EC @ mid-duty | | Mid Octave Frequency band / Hz | | | | | | | | Total in Duct | | Breakout @ 1m | | Breakout @ 3m | |
|--------------------------------|-------------------|--------------------------------|-----|-----|-----|----|----|----|----|---------------|-------|---------------|----|---------------|----|
| | | 63 | 125 | 250 | 500 | 1k | 2k | 4k | 8k | dB | dB(A) | dB(A) | NR | dB(A) | NR |
| 0.141 m³/s @ 200 Pa 100% | Inlet in duct dB | 54 | 57 | 60 | 61 | 60 | 60 | 57 | 54 | 68 | 66 | 36 | 31 | 27 | 21 |
| | Outlet in duct dB | 59 | 62 | 64 | 66 | 65 | 65 | 62 | 59 | 72 | 71 | | | | |
| 0.107 m³/s @ 150 Pa 80% | Inlet in duct dB | 50 | 53 | 55 | 56 | 56 | 55 | 50 | 46 | 63 | 61 | 32 | 26 | 22 | 16 |
| | Outlet in duct dB | 55 | 58 | 60 | 61 | 61 | 60 | 55 | 51 | 68 | 66 | | | | |
| 0.079 m³/s @ 100 Pa 60% | Inlet in duct dB | 45 | 48 | 49 | 51 | 50 | 49 | 43 | 37 | 57 | 55 | 26 | 21 | 17 | 11 |
| | Outlet in duct dB | 50 | 53 | 54 | 56 | 55 | 54 | 48 | 42 | 62 | 60 | | | | |
| 0.052 m³/s @ 50 Pa 40% | Inlet in duct dB | 38 | 40 | 40 | 41 | 41 | 39 | 32 | 24 | 48 | 45 | 17 | 11 | 7 | 1 |
| | Outlet in duct dB | 43 | 45 | 45 | 46 | 46 | 44 | 37 | 29 | 53 | 50 | | | | |

Acoustic Cabinet Fans - Twin - RMTS-EC



TECHNICAL DATA - RMTS 250-EC - roof model

FAN SPEED



| ELECTRICAL DATA | MODEL | FAN POWER W | SUPPLY | FLC amps |
|-----------------|-------------|-------------|----------|----------|
| | RMTS 250 EC | 170 | 230V 1Ph | 1.40 |

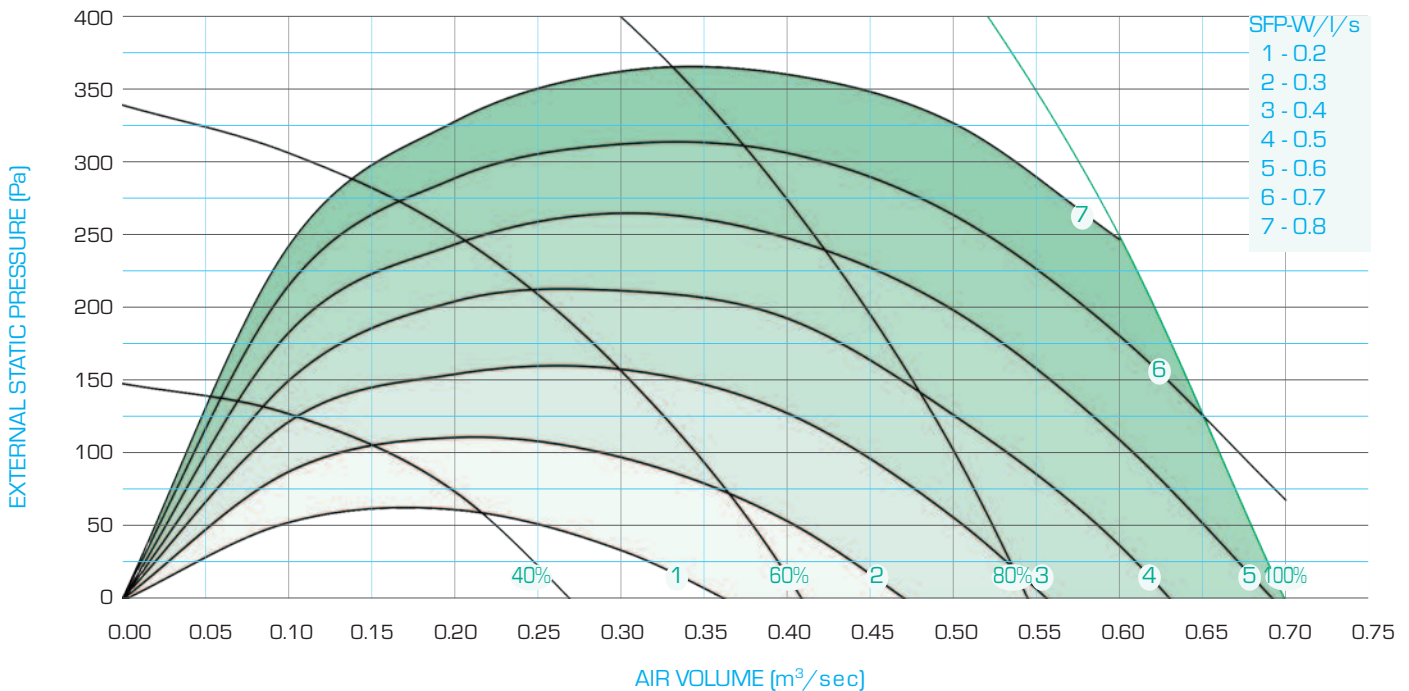
| RMTS 250 EC @ mid-duty | | Mid Octave Frequency band / Hz | | | | | | | | Total in Duct | | Breakout @ 1m | | Breakout @ 3m | |
|--------------------------------|-------------------|--------------------------------|-----|-----|-----|----|----|----|----|---------------|-------|---------------|----|---------------|----|
| | | 63 | 125 | 250 | 500 | 1k | 2k | 4k | 8k | dB | dB(A) | dB(A) | NR | dB(A) | NR |
| 0.283 m³/s @ 200 Pa 100% | Inlet in duct dB | 60 | 65 | 64 | 64 | 63 | 62 | 60 | 52 | 71 | 68 | 40 | 34 | 31 | 24 |
| | Outlet in duct dB | 65 | 70 | 69 | 69 | 68 | 67 | 65 | 57 | 76 | 73 | | | | |
| 0.215 m³/s @ 150 Pa 80% | Inlet in duct dB | 56 | 59 | 58 | 58 | 57 | 56 | 53 | 44 | 66 | 62 | 34 | 28 | 25 | 18 |
| | Outlet in duct dB | 61 | 64 | 63 | 63 | 62 | 61 | 58 | 49 | 71 | 67 | | | | |
| 0.158 m³/s @ 100 Pa 60% | Inlet in duct dB | 50 | 53 | 52 | 52 | 51 | 49 | 45 | 35 | 59 | 56 | 28 | 22 | 19 | 12 |
| | Outlet in duct dB | 55 | 58 | 57 | 57 | 56 | 54 | 50 | 40 | 64 | 61 | | | | |
| 0.102 m³/s @ 50 Pa 40% | Inlet in duct dB | 43 | 45 | 43 | 42 | 42 | 39 | 34 | 21 | 51 | 46 | 19 | 12 | 9 | 2 |
| | Outlet in duct dB | 48 | 50 | 48 | 47 | 47 | 44 | 39 | 26 | 56 | 51 | | | | |

Acoustic Cabinet Fans - Twin - RMTS-EC



TECHNICAL DATA - RMTS 315-EC - roof model

FAN SPEED



| ELECTRICAL DATA | MODEL | FAN POWER W | SUPPLY | FLC amps |
|-----------------|-------------|-------------|----------|----------|
| | RMTS 315 EC | 510 | 230V 1Ph | 3.10 |

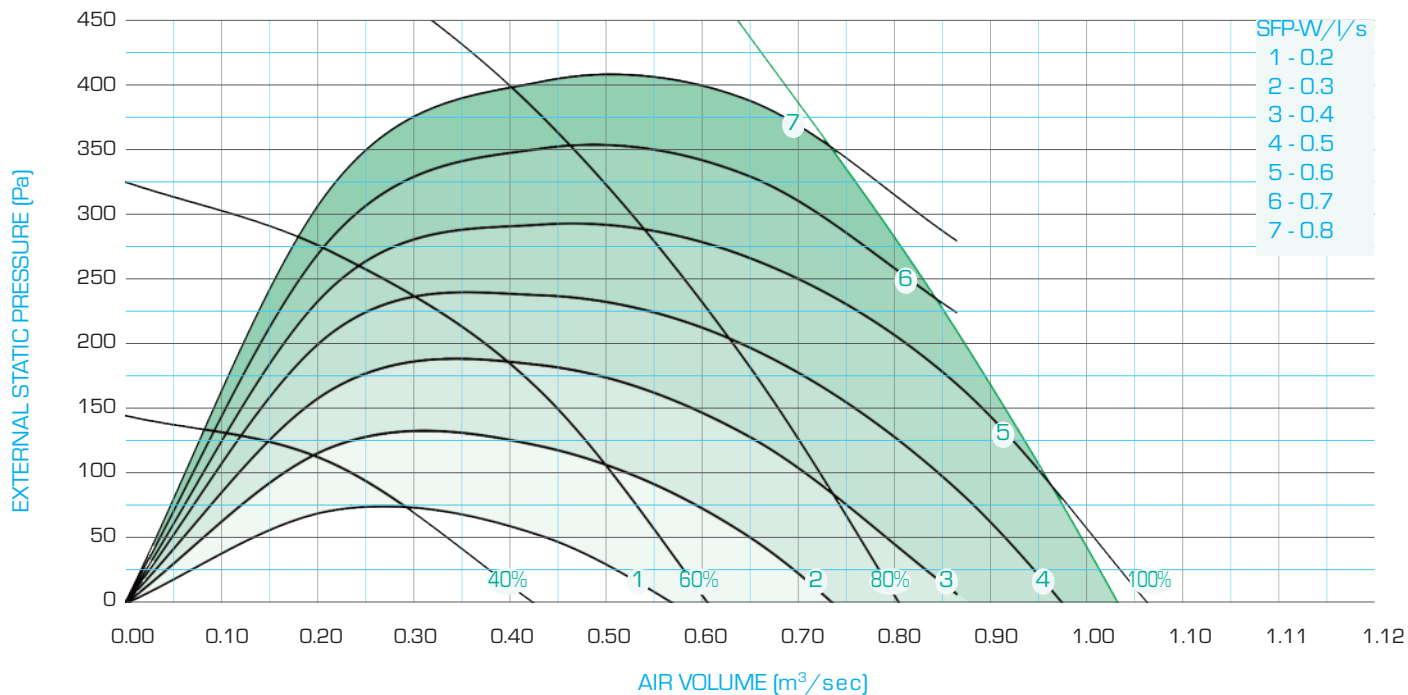
| RMTS 315 EC @ mid-duty | | Mid Octave Frequency band / Hz | | | | | | | | Total in Duct | | Breakout @ 1m | | Breakout @ 3m | |
|------------------------------|-------------------|--------------------------------|-----|-----|-----|----|----|----|----|---------------|-------|---------------|----|---------------|----|
| | | 63 | 125 | 250 | 500 | 1k | 2k | 4k | 8k | dB | dB(A) | dB(A) | NR | dB(A) | NR |
| 0.59m³/s @ 200 Pa 100% | Inlet in duct dB | 66 | 71 | 76 | 74 | 72 | 71 | 69 | 62 | 81 | 78 | 50 | 47 | 41 | 37 |
| | Outlet in duct dB | 71 | 76 | 81 | 79 | 77 | 76 | 74 | 67 | 86 | 83 | | | | |
| 0.45 m³/s @ 150 Pa 80% | Inlet in duct dB | 62 | 67 | 70 | 68 | 66 | 65 | 62 | 54 | 75 | 72 | 44 | 41 | 35 | 31 |
| | Outlet in duct dB | 67 | 72 | 75 | 73 | 71 | 70 | 67 | 59 | 80 | 77 | | | | |
| 0.33 m³/s @ 100 Pa 60% | Inlet in duct dB | 57 | 62 | 63 | 61 | 60 | 58 | 54 | 44 | 69 | 65 | 38 | 33 | 28 | 23 |
| | Outlet in duct dB | 62 | 67 | 68 | 66 | 65 | 63 | 59 | 49 | 74 | 70 | | | | |
| 0.22 m³/s @ 50 Pa 40% | Inlet in duct dB | 51 | 54 | 53 | 51 | 51 | 49 | 44 | 31 | 60 | 55 | 28 | 23 | 19 | 12 |
| | Outlet in duct dB | 56 | 59 | 58 | 56 | 56 | 54 | 49 | 36 | 65 | 60 | | | | |

Acoustic Cabinet Fans - Twin - RMTS-EC



TECHNICAL DATA - RMTS 350-EC - roof model

FAN SPEED



| ELECTRICAL DATA | MODEL | FAN POWER W | SUPPLY | FLC amps |
|-----------------|-------------|-------------|----------|----------|
| | RMTS 350 EC | 450 | 230V 1Ph | 2.90 |

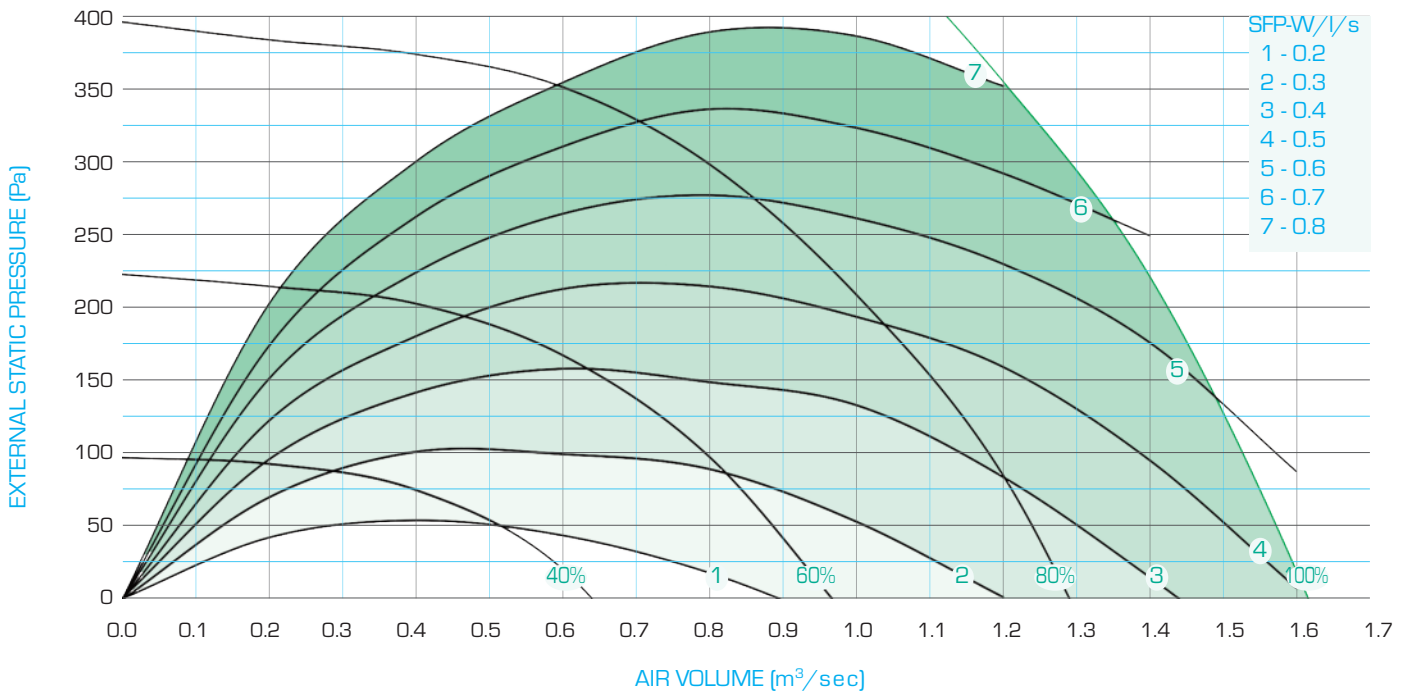
| RMTS 350 EC @ mid-duty | | Mid Octave Frequency band / Hz | | | | | | | | Total in Duct | | Breakout @ 1m | | Breakout @ 3m | |
|------------------------------|-------------------|--------------------------------|-----|-----|-----|----|----|----|----|---------------|-------|---------------|----|---------------|----|
| | | 63 | 125 | 250 | 500 | 1k | 2k | 4k | 8k | dB | dB(A) | dB(A) | NR | dB(A) | NR |
| 0.78m³/s @ 200 Pa 100% | Inlet in duct dB | 65 | 74 | 70 | 67 | 62 | 61 | 59 | 50 | 77 | 69 | 45 | 41 | 36 | 31 |
| | Outlet in duct dB | 70 | 79 | 75 | 72 | 67 | 66 | 64 | 55 | 82 | 74 | | | | |
| 0.61 m³/s @ 150 Pa 80% | Inlet in duct dB | 61 | 70 | 66 | 62 | 57 | 56 | 53 | 43 | 73 | 64 | 41 | 37 | 31 | 26 |
| | Outlet in duct dB | 66 | 75 | 71 | 67 | 62 | 61 | 58 | 48 | 78 | 69 | | | | |
| 0.45 m³/s @ 100 Pa 60% | Inlet in duct dB | 56 | 66 | 59 | 56 | 51 | 49 | 45 | 34 | 68 | 58 | 36 | 31 | 26 | 20 |
| | Outlet in duct dB | 61 | 71 | 64 | 61 | 56 | 54 | 50 | 39 | 73 | 63 | | | | |
| 0.30 m³/s @ 50 Pa 40% | Inlet in duct dB | 49 | 59 | 51 | 47 | 42 | 40 | 34 | 21 | 60 | 50 | 28 | 23 | 19 | 12 |
| | Outlet in duct dB | 54 | 64 | 56 | 52 | 48 | 45 | 39 | 26 | 65 | 55 | | | | |

Acoustic Cabinet Fans - Twin - RMTS-EC



TECHNICAL DATA - RMTS 450-EC - roof model

FAN SPEED



| ELECTRICAL DATA | MODEL | FAN POWER W | SUPPLY | FLC amps |
|-----------------|-------------|-------------|----------|----------|
| | RMTS 450 EC | 1010 | 400V 3Ph | 1.60 |

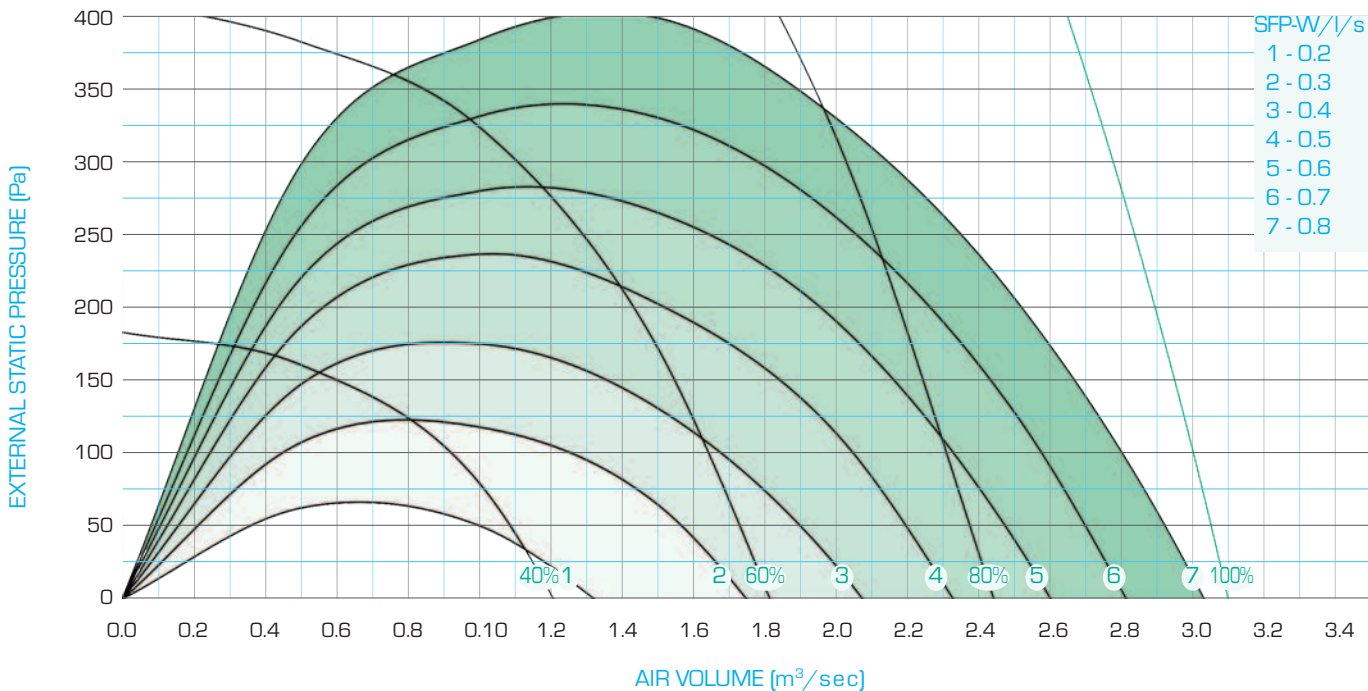
| RMTS450 EC @ mid-duty | | Mid Octave Frequency band / Hz | | | | | | | | Total in Duct | | Breakout @ 1m | | Breakout @ 3m | |
|-------------------------------|-------------------|--------------------------------|-----|-----|-----|----|----|----|----|---------------|-------|---------------|----|---------------|----|
| | | 63 | 125 | 250 | 500 | 1k | 2k | 4k | 8k | dB | dB(A) | dB(A) | NR | dB(A) | NR |
| 1.32 m³/s @ 200 Pa 100% | Inlet in duct dB | 66 | 71 | 71 | 70 | 66 | 68 | 62 | 54 | 77 | 73 | 45 | 41 | 36 | 31 |
| | Outlet in duct dB | 67 | 73 | 72 | 74 | 76 | 74 | 68 | 60 | 81 | 80 | | | | |
| 1.02 m³/s @ 150 Pa 80% | Inlet in duct dB | 61 | 67 | 65 | 65 | 61 | 62 | 56 | 47 | 72 | 68 | 40 | 35 | 31 | 25 |
| | Outlet in duct dB | 63 | 69 | 67 | 69 | 70 | 69 | 62 | 52 | 76 | 74 | | | | |
| 0.72 m³/s @ 100 Pa 60% | Inlet in duct dB | 56 | 62 | 59 | 58 | 54 | 55 | 48 | 37 | 66 | 61 | 34 | 29 | 24 | 19 |
| | Outlet in duct dB | 57 | 64 | 60 | 62 | 64 | 62 | 54 | 43 | 70 | 67 | | | | |
| 0.48 m³/s @ 50 Pa 40% | Inlet in duct dB | 50 | 54 | 50 | 49 | 46 | 46 | 37 | 24 | 58 | 52 | 25 | 20 | 15 | 10 |
| | Outlet in duct dB | 51 | 56 | 52 | 53 | 55 | 52 | 43 | 30 | 61 | 59 | | | | |

Acoustic Cabinet Fans - Twin - RMTS-EC



TECHNICAL DATA - RMTS 560-EC - roof model

FAN SPEED



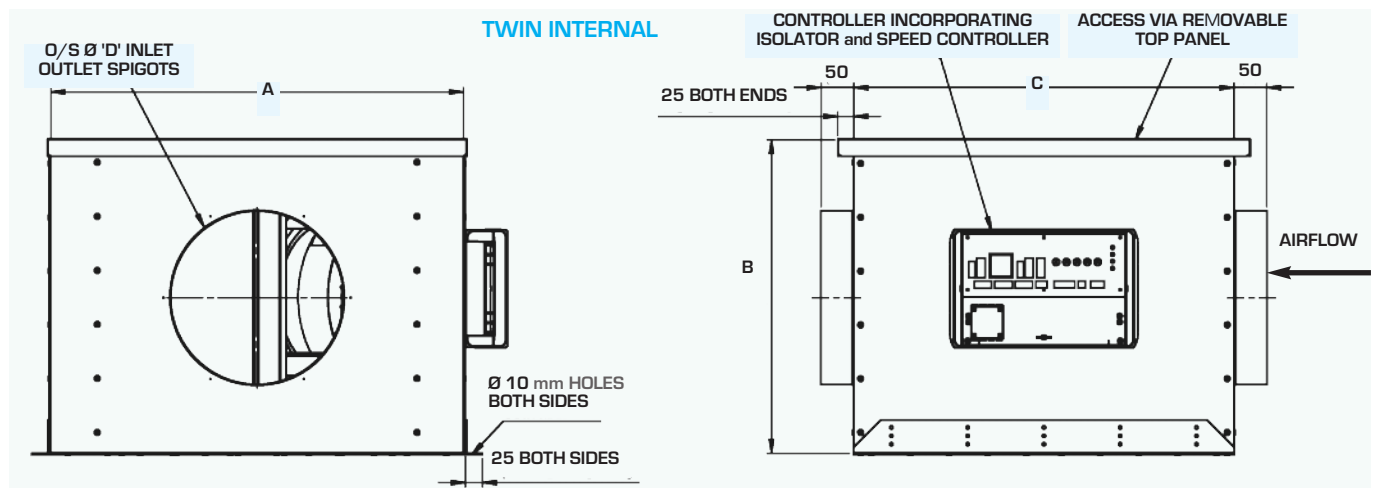
| ELECTRICAL DATA | MODEL | FAN POWER W | SUPPLY | FLC amps |
|-----------------|-------------|-------------|----------|----------|
| | RMTS 560 EC | 3100 | 400V 3Ph | 4.9 |

| RMTS 560 EC @ mid-duty | | Mid Octave Frequency band / Hz | | | | | | | | Total in Duct | | Breakout @ 1m | | Breakout @ 3m | |
|-------------------------|-------------------|--------------------------------|-----|-----|-----|----|----|----|----|---------------|-------|---------------|----|---------------|----|
| | | 63 | 125 | 250 | 500 | 1k | 2k | 4k | 8k | dB | dB(A) | dB(A) | NR | dB(A) | NR |
| 2.84 m³/s @ 200 Pa 100% | Inlet in duct dB | 70 | 73 | 82 | 78 | 76 | 78 | 74 | 76 | 86 | 84 | 55 | 50 | 45 | 40 |
| | Outlet in duct dB | 73 | 75 | 82 | 84 | 85 | 83 | 79 | 78 | 90 | 90 | | | | |
| 2.20 m³/s @ 150 Pa 80% | Inlet in duct dB | 67 | 73 | 75 | 72 | 70 | 71 | 69 | 64 | 80 | 77 | 49 | 44 | 39 | 34 |
| | Outlet in duct dB | 69 | 75 | 75 | 78 | 79 | 77 | 73 | 67 | 85 | 83 | | | | |
| 1.62 m³/s @ 100 Pa 60% | Inlet in duct dB | 62 | 67 | 68 | 65 | 63 | 63 | 61 | 55 | 73 | 70 | 41 | 37 | 32 | 27 |
| | Outlet in duct dB | 64 | 68 | 68 | 70 | 72 | 69 | 64 | 57 | 77 | 75 | | | | |
| 1.08 m³/s @ 50 Pa 40% | Inlet in duct dB | 61 | 58 | 58 | 56 | 55 | 55 | 46 | 40 | 66 | 60 | 32 | 28 | 23 | 18 |
| | Outlet in duct dB | 62 | 59 | 59 | 62 | 63 | 59 | 50 | 43 | 69 | 66 | | | | |

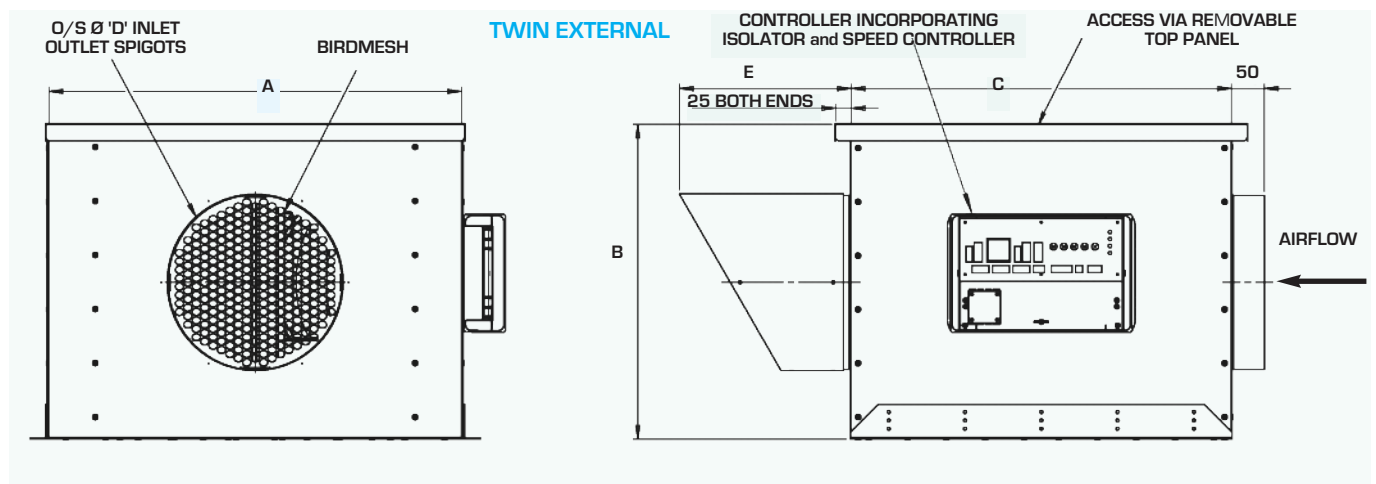
Acoustic Cabinet Fans - Twin - DMTSQ-EC, RMTS-EC Plant and Roof



UNIT DIMENSIONS



| TWIN INTERNAL AND EXTERNAL | | | | | | | |
|----------------------------|------|-----|------|-----|-----|-------------|-------------|
| Model | A | B | C | D | E | kg internal | kg external |
| 150-EC | 450 | 250 | 400 | 150 | 180 | 20 | 21 |
| 200-EC | 450 | 350 | 450 | 200 | 210 | 27 | 28 |
| 250-EC | 600 | 450 | 550 | 250 | 240 | 40 | 42 |
| 315-EC | 850 | 450 | 800 | 310 | 275 | 62 | 64 |
| 350-EC | 950 | 550 | 900 | 350 | 295 | 80 | 83 |
| 450-EC | 1200 | 650 | 1200 | 450 | 350 | 131 | 134 |
| 560-EC | 1500 | 750 | 1500 | 560 | 415 | 217 | 222 |

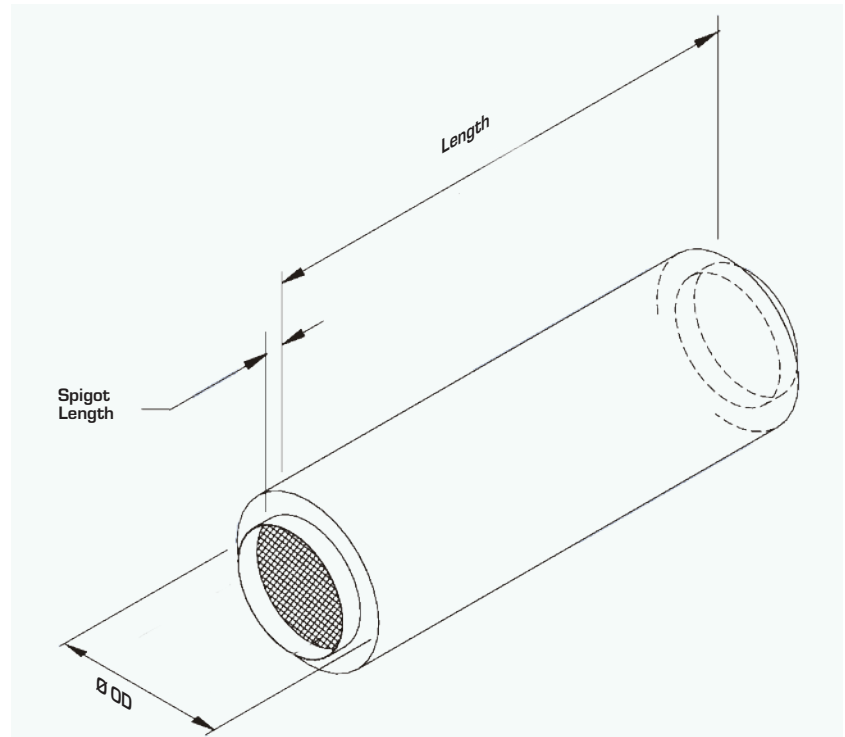


Acoustic Cabinet Fans - Twin - DMTSQ-EC, RMTS-EC Plant and Roof



ANCILLARIES - ATTENUATOR

- Circular duct attenuator
- Constructed from spiral wound, galvanised sheet steel.
- Peripheral out of airstream acoustic lining.
- Spigot connections with EPDM seals for slip jointing to adjoining ductwork



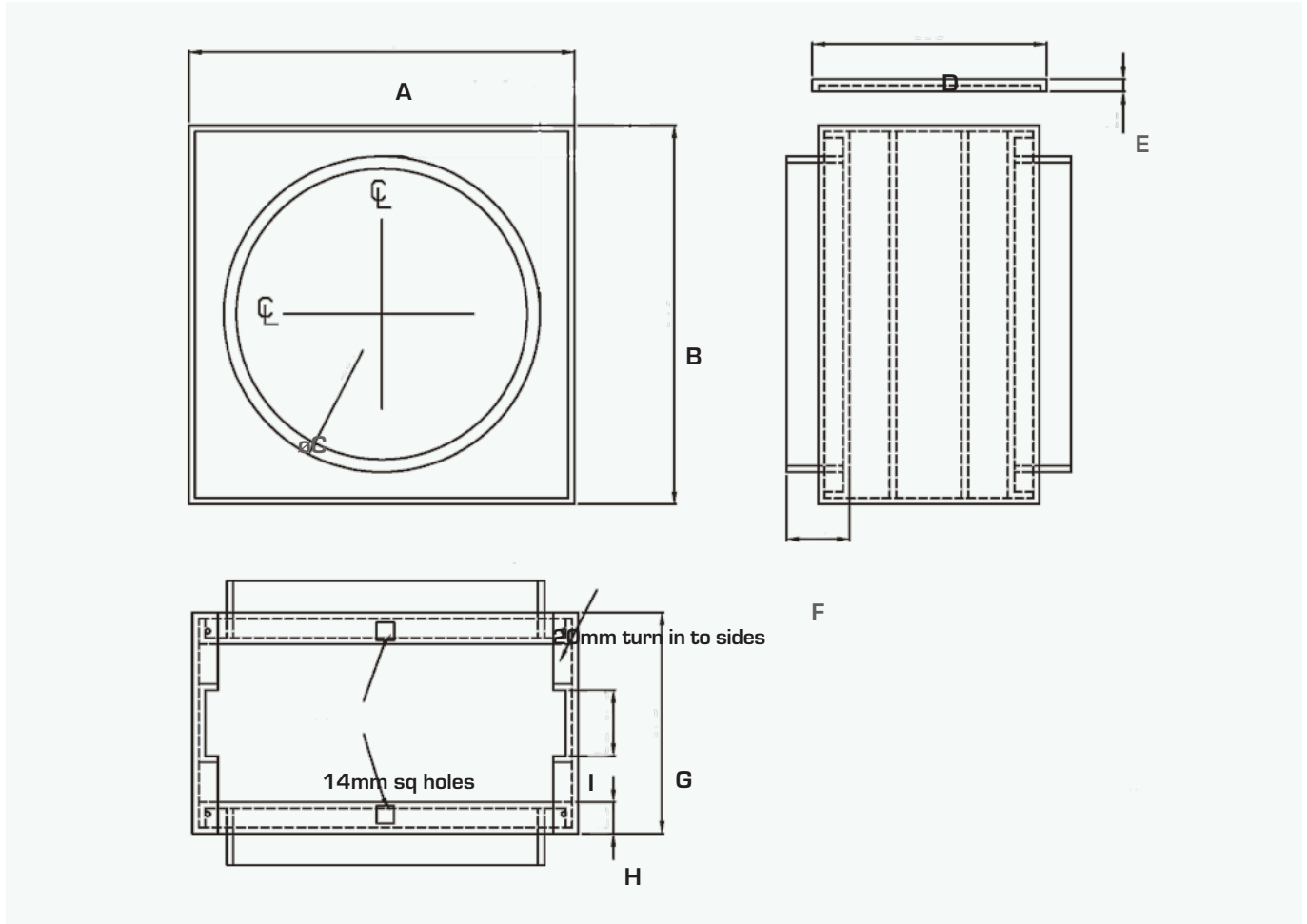
| Model | Length | Spigot Length | External Diameter |
|-----------|--------|---------------|-------------------|
| SIL150 | 600 | 38 | 255 |
| SIL200 | 600 | 38 | 305 |
| SIL250 | 600 | 38 | 360 |
| SIL315 | 600 | 38 | 405 |
| SIL350 | 600 | 38 | 455 |
| SIL450 | 600 | 38 | 565 |
| SIL560 | 600 | 38 | 605 |
| SIL150/90 | 900 | 38 | 255 |
| SIL200/90 | 900 | 38 | 305 |
| SIL250/90 | 900 | 38 | 360 |
| SIL315/90 | 900 | 38 | 405 |
| SIL350/90 | 900 | 38 | 455 |
| SIL450/90 | 900 | 38 | 565 |
| SIL560/90 | 900 | 38 | 605 |

Dimensions in mm

Acoustic Cabinet Fans - Twin - DMTSQ-EC, RMTS-EC Plant and Roof



ANCILLARIES - FILTER BOX WITH G3 FILTER



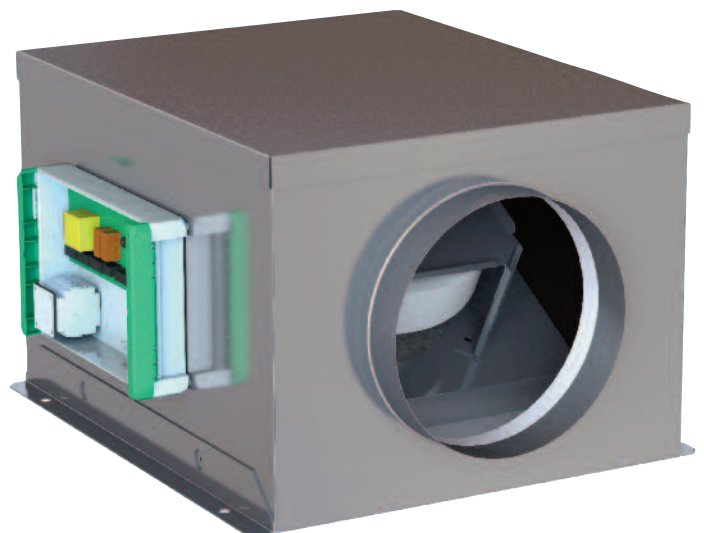
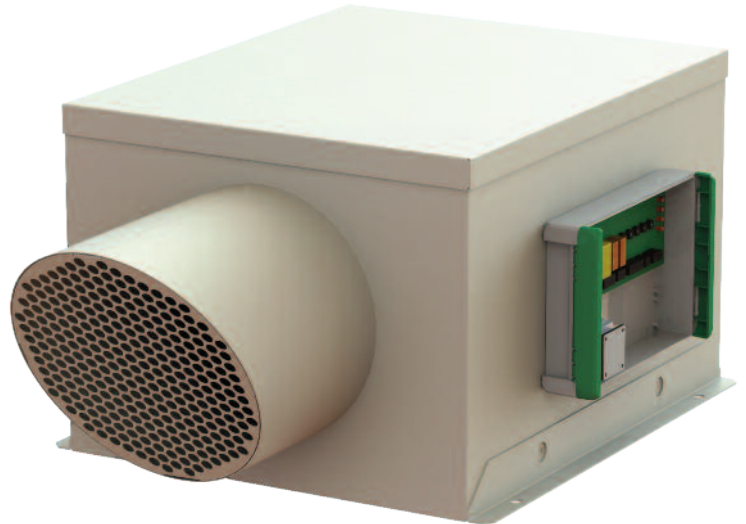
| Model | A | B | øC | D | E | F | G | H | I |
|--------|-----|-----|-----|-----|----|----|-----|----|-------|
| FUV150 | 204 | 198 | 150 | 185 | 10 | 50 | 175 | 25 | 52i/s |
| FUV200 | 254 | 249 | 200 | 185 | 10 | 50 | 175 | 25 | 52i/s |
| FUV250 | 305 | 300 | 250 | 185 | 10 | 50 | 175 | 25 | 52i/s |
| FUV315 | 350 | 376 | 315 | 185 | 10 | 50 | 175 | 25 | 52i/s |
| FUV350 | 455 | 450 | 350 | 210 | 10 | 50 | 200 | 25 | 52i/s |
| FUV450 | 500 | 505 | 450 | 210 | 10 | 50 | 200 | 25 | 52i/s |
| FUV560 | 600 | 605 | 560 | 210 | 10 | 50 | 200 | 25 | 98i/s |

Dimensions in mm

Acoustic Cabinet Fans - Single - ACFs-EC. RMS-EC Plant and Roof

SINGLE FAN MODELS

- Single Fan models are available to complement the Twin Fan range.
- Single Fan Models 0.01 m³/sec to 3.55 m³/sec
- Plant and roof mounted versions.
- Acoustic lining to reduce noise breakout
- EC fans, direct drive
- Low SFP to help achieve L2 Regulations.
- Constant Pressure Controller available
- All units are fitted with pre-wired controls designed to work with BMS systems as below
 - Fault Out
 - VFC Enable
 - VFC Boost
 - Remote speed control
- Available with no controls at special request.



Other Vectaire Products

Whole House Mechanical Ventilation

MVHR, MEV, dMEV



Midi & Midi BY-AT (MVHR)

- For wall or loft installation in homes and offices
- **Midi BY-AT with integral acoustic attenuation - very low noise levels**
- Summer bypass and frost-stat
- Up to 94% heat exchange efficiency - sfp from 0.50 W/l/s
- Up to 95 l/s at 50Pa - max 101 l/s capacity
- Models with integral humidistat
- Commissioned via integral LCD or remote LCD commissioning unit



Maxi & Maxi BY-AT (MVHR)

- For wall or loft installation in homes and offices
- **Maxi BY-AT with integral acoustic attenuation - very low noise levels**
- Summer bypass and frost-stat
- Up to 92% heat exchange efficiency - sfp from 0.40 W/l/s
- **Up to 163 l/s at 50Pa - max 177 l/s capacity**
- Models with integral humidistat
- Commissioned via integral LCD or remote LCD commissioning unit



MaxiPlus-BY & MaxiPlus-BY/AT (MVHR)

- For wall or loft installation in homes and offices
- **MaxiPlus-BY/AT with integral acoustic attenuation - very low noise levels**
- Summer bypass and frost-stat
- Up to 89% heat exchange efficiency - sfp from 0.46 W/l/s
- **Up to 230 l/s at 50Pa - max 238 l/s capacity**
- Models with integral humidistat
- Commissioned via integral LCD or remote LCD commissioning unit



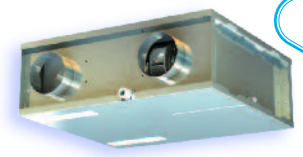
EVO200 & EVO250 (MVHR)

- For in-line installation in homes and offices
- Summer bypass and frost-stat
- Up to 94/88% heat exchange efficiency
- Up to 74/80 litre/sec at 50Pa - max 81/85 l/s capacity
- Specific Fan Power from 0.64/0.70 W/l/s
- Models with integral humidistat
- Commissioned via remote LCD commissioning unit



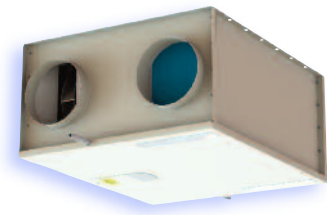
-EVO220 (MVHR)

- For in-line installation in homes and offices
- Summer bypass and frost-stat
- Up to 87% heat exchange efficiency - sfp from 0.55 W/l/s
- Up to 70 l/s at 50Pa - max 75 l/s capacity
- Models with integral humidistat
- Commissioned via remote LCD commissioning unit



EVO350 (MVHR)

- For in-line installation in homes and offices
- Summer bypass and frost-stat
- Up to 88% heat exchange efficiency - sfp from 0.67 W/l/s
- Up to 107 l/s at 50Pa - max 116 l/s capacity
- Models with integral humidistat
- Commissioned via remote LCD commissioning unit



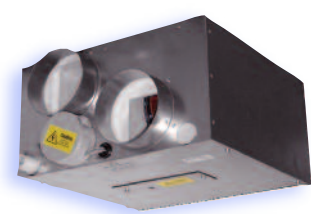
Studio (MVHR)

- For in-line installation in multi-occupancy establishments
- With and without summer bypass and frost-stat
- Up to 80% heat exchange efficiency - sfp from 0.91 W/l/s
- Up to 55 l/s at 50Pa - max 59 l/s capacity
- Models with integral humidistat
- Commissioned via remote LCD commissioning unit



Mini (MVHR)

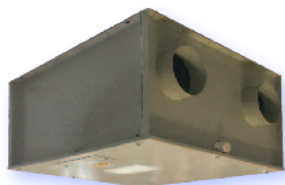
- For in-line installation in multi-occupancy establishments
- With and without summer bypass and frost-stat
- Up to 83% heat exchange efficiency - sfp from 1.11 W/l/s
- Up to 30 l/s at 50Pa - max 34 l/s capacity
- Commissioned via remote LCD commissioning unit



Other Vectaire Products

Whole House Mechanical Ventilation

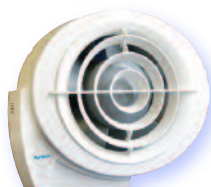
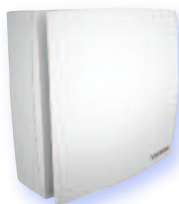
MVHR, MEV, dMEV



NEW



NEW



WVHR100/90DC-B-BY (MVHR)

- For in-line installation in homes and offices
- Summer bypass and frost-stat
- Up to 88% heat exchange efficiency - sfp from 0.63 W/l/s
- Up to 78 l/s at 50Pa - max 83 l/s capacity
- Models with integral humidistat
- Commissioned via remote LCD commissioning unit

MBOX125/2DC-B (MEV)

- For in-line installation in homes and offices
- Ultra low profile - less than 184mm deep
- Up to 97 l/s at 50Pa - max 108 l/s capacity
- sfp from 0.20 W/l/s
- Purge option factory set
- Available with 204mm x 60mm spigot
- Continuous running - choice of trickle and boost speeds

MBOX200/2DC (MEV)

- For in-line installation in homes and offices
- Up to 233 l/s at 50Pa - max 251 l/s capacity
- sfp from 0.27 W/l/s
- Purge option factory set
- Available with 220mm x 90mm spigot
- Continuous running - choice of trickle and boost speeds

Elegance (dMEV)

- Continuous running 3 speed (2 trickle speeds and boost) axial fan
- For installation in all domestic wet rooms
- Up to 26.9 litre/sec capacity - sfp from 0.09 W/l/s
- Best SFP in Class
- EL100 and EL150 - AC motor versions in 100mm and 150mm dia available

Elix (dMEV)

- Continuous running 3 speed (2 trickle speeds and boost) centrifugal fan
- EC motor for high efficiency low energy usage
- For installation in all domestic wet rooms
- Up to 28 litre/sec capacity - sfp from 0.14 W/l/s
- Best SFP in Class
- ELX100 - AC motor version in 100mm dia available

ELPREX (dMEV)

- Continuous running 4 speed (1 trickle and choice of 3 boost speeds) centrifugal fan
- Energy efficient motor
- For installation in walls and ceilings in all kitchens
- Up to 60 litre/sec capacity - sfp from 0.35 W/l/s

E-Smile (dMEV)

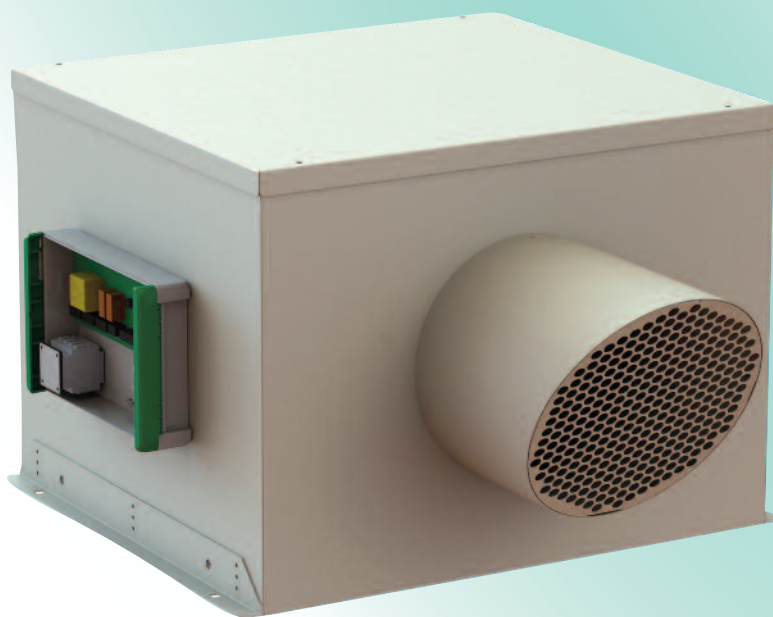
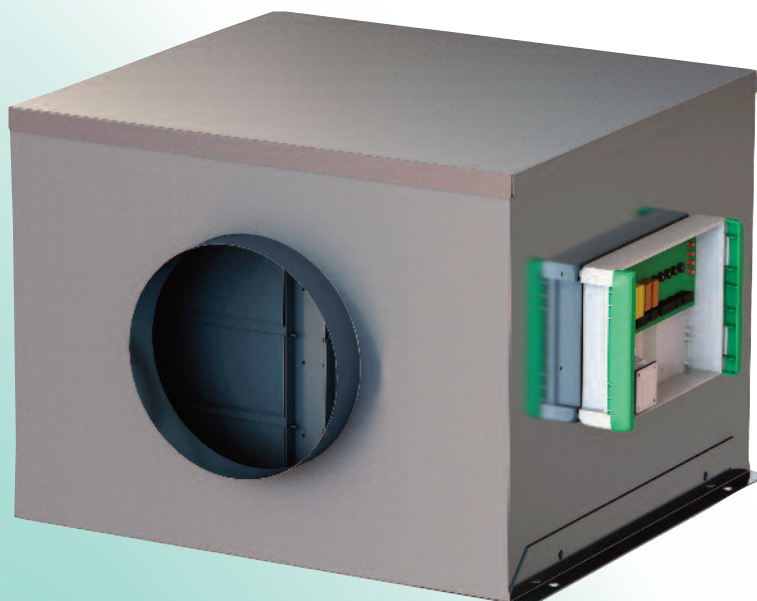
- Continuous running 3 speed (2 trickle speeds and boost) axial fan
- Up to 21 litre/sec capacity
- Specific Fan Power from 0.37 W/l/s

Heatrec1003

- Single room heat recovery unit
- EC motors for high efficiency low energy usage
- Recovers up to 75% of heat from extracted, polluted air
- 3 speed for any domestic wet room
- Continuous running - choice of trickle and boost speeds
- Heat exchange tube available in 3 lengths
- With summer bypass and frost-stat

Acoustic Cabinet Fans with EC Motors

Twin Fan Models



Twin Fan Models - 0.01 m³/sec to 3.22 m³/sec - EC Motors - Low SFPs

Vectaire Ltd
Lincoln Road
Cressex Business Park
High Wycombe
Buckinghamshire
HP12 3RH
Tel: +44(0)1494 522333
Fax: +44(0)1494 522337
Email: sales@vectaire.co.uk
Web: www.vectaire.co.uk

